



LP8860-Q1 End-of-Line Programming Guide for EEPROM

Sung Ho Yoon

ABSTRACT

The LP8860-Q1 device is an automotive LED driver with boost converter to support infotainment display, automotive cluster, and lighting applications. In order to support wide range of application conditions for automotive application, LP8860-Q1 offers various settings with EEPROM registers. There are also various versions of EEPROM options of LP8860-Q1, which are pre-programmed for generic application conditions, however still not enough to support all different cases. This document provides detail information how to program EEPROM registers at the end of production lines of system, so EEPROM of LP8860-Q1 can be optimized for particular applications as needed. Information in this document is also available in [LP8860-Q1 datasheet](#) sections 8.5 and 8.6.

Contents

1	EEPROM Structure	2
---	------------------------	---

List of Figures

1	EEPROM and EEPROM Register Configuration	2
2	I ² C Register Write Format	2
3	I ² C Register Read Format	2
4	SPI Register Write Cycle	3
5	SPI Register Read Cycle	3

Trademarks

All trademarks are the property of their respective owners.

1 EEPROM Structure

LP8860-Q1 has 2 different register fields. One is register field to control LED driver setting such as brightness, LED current, brightness slope. Another one is EEPROM register field to setup configurations of the device which default register values can be downloaded from EEPROM (default pre-programmed values).

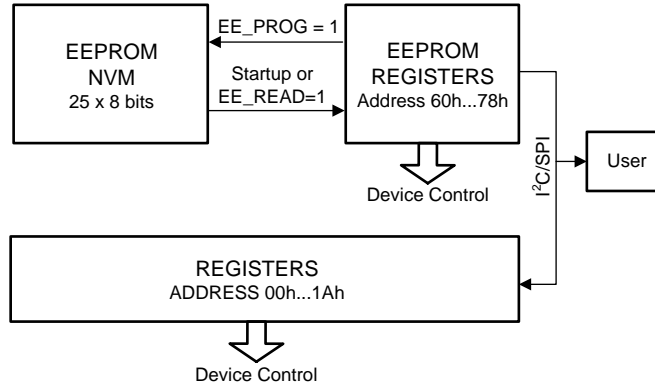


Figure 1. EEPROM and EEPROM Register Configuration

LP8860-Q1 supports both I²C and SPI interfaces for register/EEPROM programming, and protocols are shown as figures below.

I²C Slave address of LP8860-Q1 is 2Dh in 7 bit or 5Ah for write and 5Bh for read in 8-bit format.

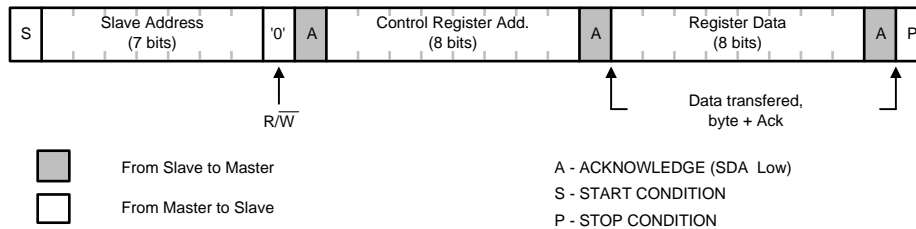


Figure 2. I²C Register Write Format

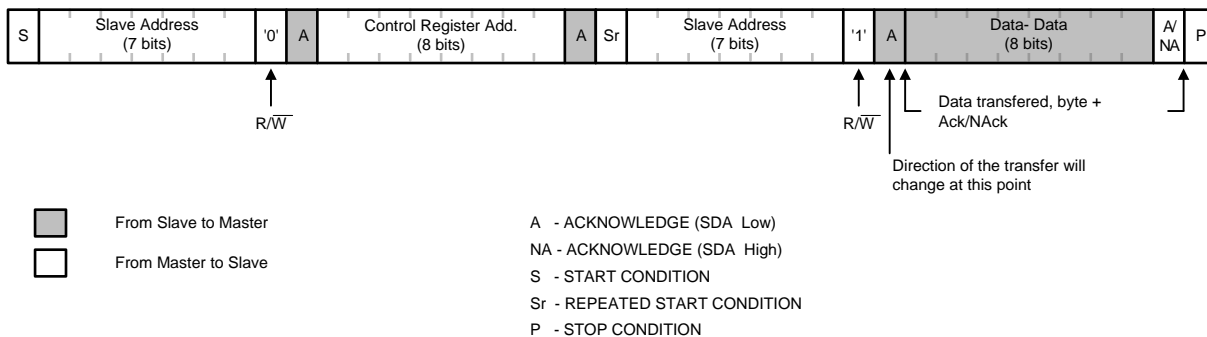
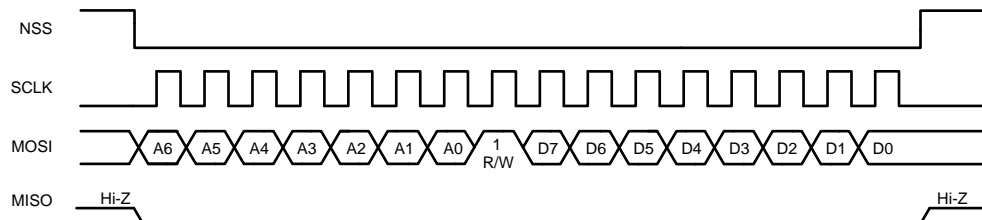
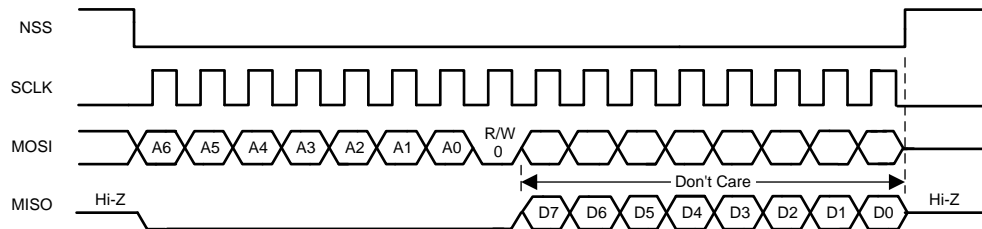


Figure 3. I²C Register Read Format


Figure 4. SPI Register Write Cycle

Figure 5. SPI Register Read Cycle

In order to support various configurations, EEPROM default values can be reprogrammed through these procedures.

	STEPS	ACTIONS	DESCRIPTIONS
1	Power rails up	VDD high	VIN (boost power) better be low not to make boost work during EEPROM register change. If separate control of VIN is not available, make brightness input 0% at least
2		VDD POR	VDD > 2.2V
3		EN/VDDIO high	Make sure VDD level is 2.5 V (minimum UVLO level) or higher before this step
4		Wait 500 μ s at least	500 μ s for internal state machine and EEPROM setup
5	Unlock EEPROM	Write unlock code to register address 0x1A	Write data 0x08, 0xBA, 0xEF starting from 0x08
6	Update EEPROM registers	Change EEPROM register values from address 0x60 to 0x78	To configure EEPROM registers for specific application conditions
7	Burn EEPROM	Write EEPROM programming code to register address 0x19	Write data 0x02
8		Wait 200 ms	Wait for re-write to EEPROM
9		Write EEPROM programming code to register address 0x19	Write data 0x00
10	Cycle power	EN/VDDIO or VDD	To apply updated EEPROM values for device control

IMPORTANT NOTICE FOR TI DESIGN INFORMATION AND RESOURCES

Texas Instruments Incorporated ("TI") technical, application or other design advice, services or information, including, but not limited to, reference designs and materials relating to evaluation modules, (collectively, "TI Resources") are intended to assist designers who are developing applications that incorporate TI products; by downloading, accessing or using any particular TI Resource in any way, you (individually or, if you are acting on behalf of a company, your company) agree to use it solely for this purpose and subject to the terms of this Notice.

TI's provision of TI Resources does not expand or otherwise alter TI's applicable published warranties or warranty disclaimers for TI products, and no additional obligations or liabilities arise from TI providing such TI Resources. TI reserves the right to make corrections, enhancements, improvements and other changes to its TI Resources.

You understand and agree that you remain responsible for using your independent analysis, evaluation and judgment in designing your applications and that you have full and exclusive responsibility to assure the safety of your applications and compliance of your applications (and of all TI products used in or for your applications) with all applicable regulations, laws and other applicable requirements. You represent that, with respect to your applications, you have all the necessary expertise to create and implement safeguards that (1) anticipate dangerous consequences of failures, (2) monitor failures and their consequences, and (3) lessen the likelihood of failures that might cause harm and take appropriate actions. You agree that prior to using or distributing any applications that include TI products, you will thoroughly test such applications and the functionality of such TI products as used in such applications. TI has not conducted any testing other than that specifically described in the published documentation for a particular TI Resource.

You are authorized to use, copy and modify any individual TI Resource only in connection with the development of applications that include the TI product(s) identified in such TI Resource. NO OTHER LICENSE, EXPRESS OR IMPLIED, BY ESTOPPEL OR OTHERWISE TO ANY OTHER TI INTELLECTUAL PROPERTY RIGHT, AND NO LICENSE TO ANY TECHNOLOGY OR INTELLECTUAL PROPERTY RIGHT OF TI OR ANY THIRD PARTY IS GRANTED HEREIN, including but not limited to any patent right, copyright, mask work right, or other intellectual property right relating to any combination, machine, or process in which TI products or services are used. Information regarding or referencing third-party products or services does not constitute a license to use such products or services, or a warranty or endorsement thereof. Use of TI Resources may require a license from a third party under the patents or other intellectual property of the third party, or a license from TI under the patents or other intellectual property of TI.

TI RESOURCES ARE PROVIDED "AS IS" AND WITH ALL FAULTS. TI DISCLAIMS ALL OTHER WARRANTIES OR REPRESENTATIONS, EXPRESS OR IMPLIED, REGARDING TI RESOURCES OR USE THEREOF, INCLUDING BUT NOT LIMITED TO ACCURACY OR COMPLETENESS, TITLE, ANY EPIDEMIC FAILURE WARRANTY AND ANY IMPLIED WARRANTIES OF MERCHANTABILITY, FITNESS FOR A PARTICULAR PURPOSE, AND NON-INFRINGEMENT OF ANY THIRD PARTY INTELLECTUAL PROPERTY RIGHTS.

TI SHALL NOT BE LIABLE FOR AND SHALL NOT DEFEND OR INDEMNIFY YOU AGAINST ANY CLAIM, INCLUDING BUT NOT LIMITED TO ANY INFRINGEMENT CLAIM THAT RELATES TO OR IS BASED ON ANY COMBINATION OF PRODUCTS EVEN IF DESCRIBED IN TI RESOURCES OR OTHERWISE. IN NO EVENT SHALL TI BE LIABLE FOR ANY ACTUAL, DIRECT, SPECIAL, COLLATERAL, INDIRECT, PUNITIVE, INCIDENTAL, CONSEQUENTIAL OR EXEMPLARY DAMAGES IN CONNECTION WITH OR ARISING OUT OF TI RESOURCES OR USE THEREOF, AND REGARDLESS OF WHETHER TI HAS BEEN ADVISED OF THE POSSIBILITY OF SUCH DAMAGES.

You agree to fully indemnify TI and its representatives against any damages, costs, losses, and/or liabilities arising out of your non-compliance with the terms and provisions of this Notice.

This Notice applies to TI Resources. Additional terms apply to the use and purchase of certain types of materials, TI products and services. These include; without limitation, TI's standard terms for semiconductor products (<http://www.ti.com/sc/docs/stdterms.htm>), [evaluation modules](#), and [samples](http://www.ti.com/sc/docs/sampterm.htm) (<http://www.ti.com/sc/docs/sampterm.htm>).

Mailing Address: Texas Instruments, Post Office Box 655303, Dallas, Texas 75265
Copyright © 2017, Texas Instruments Incorporated