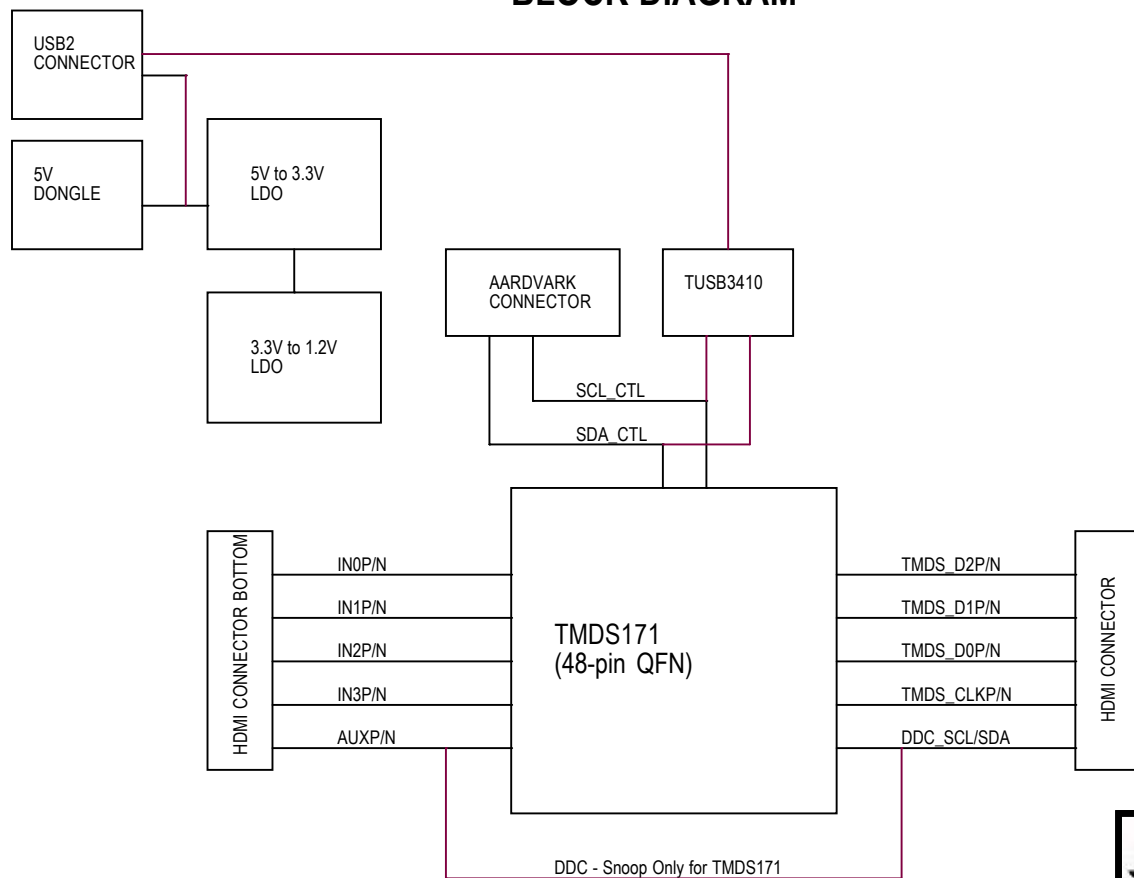


NOTES:

- 100-ohm differential impedance for HDMI differential pairs.

BLOCK DIAGRAM



TEXAS INSTRUMENTS

TMS171RGZVM

SIZE

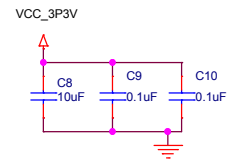
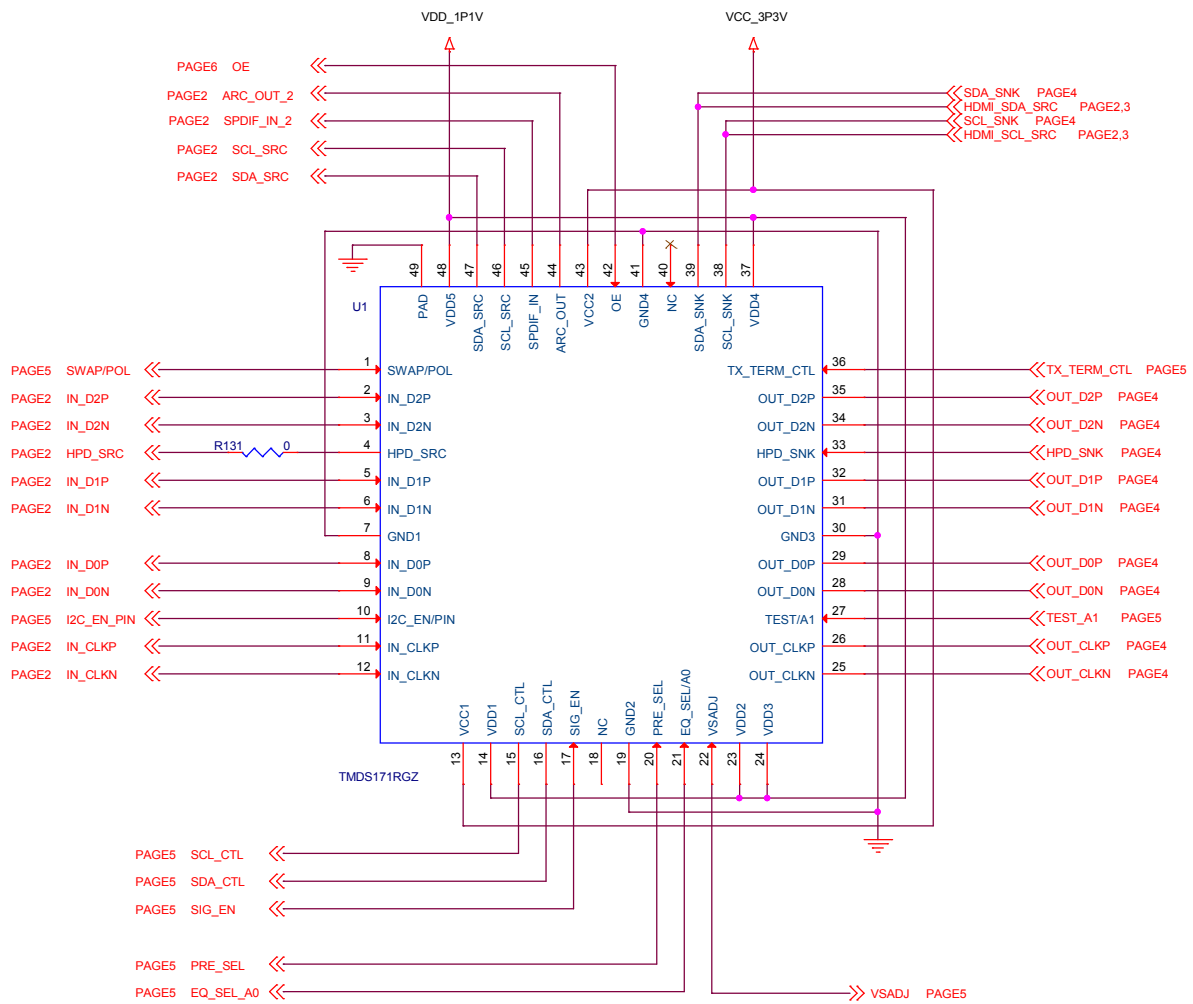
A

DWG NO: INT028

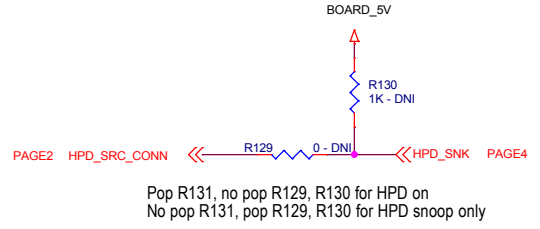
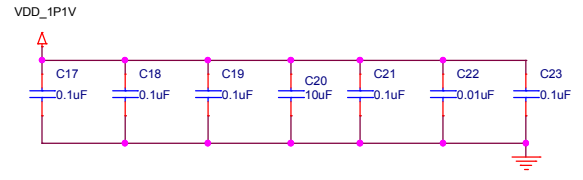
SCALE: NONE

Monday, December 07, 2015


Sheet 1 of 8



Note for TMDS1x1 products Board 1.1V is set to 1.2V



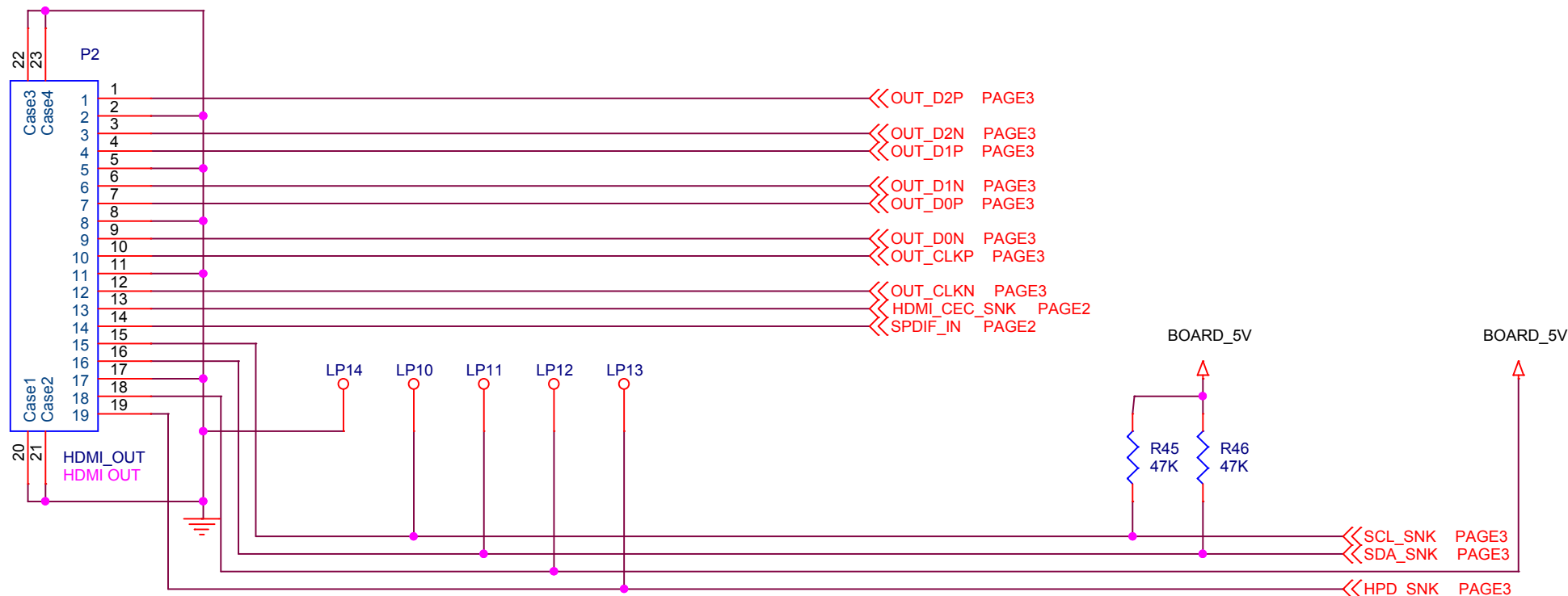
Pop R131, no pop R129, R130 for HPD on
No pop R131, pop R129, R130 for HPD snoop only

**TEXAS INSTRUMENTS**

TMDS171RGZEV, TMDS171RGZ

SIZE B	DWG NO: INT028
SCALE: NONE	Monday, December 07, 2015
	Sheet 3 of 8

HDMI TX

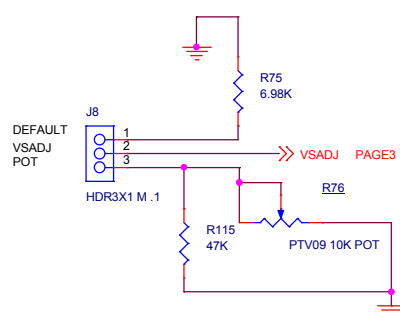
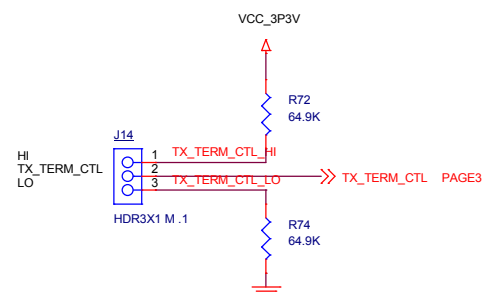
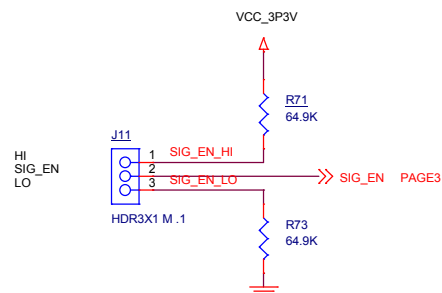
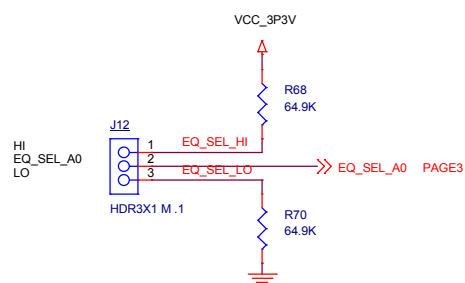
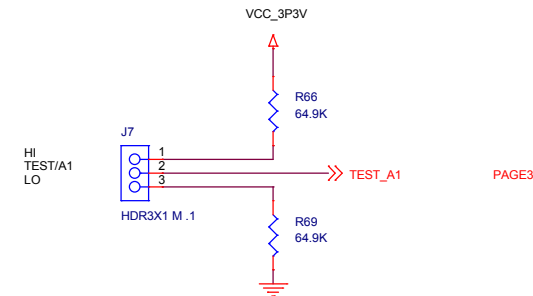
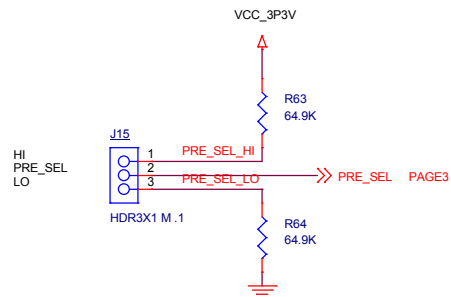
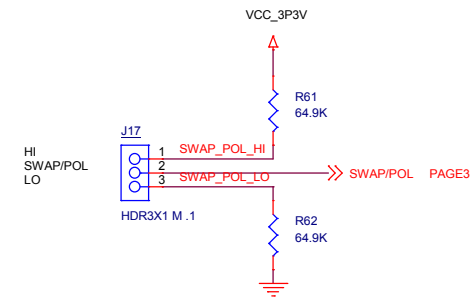
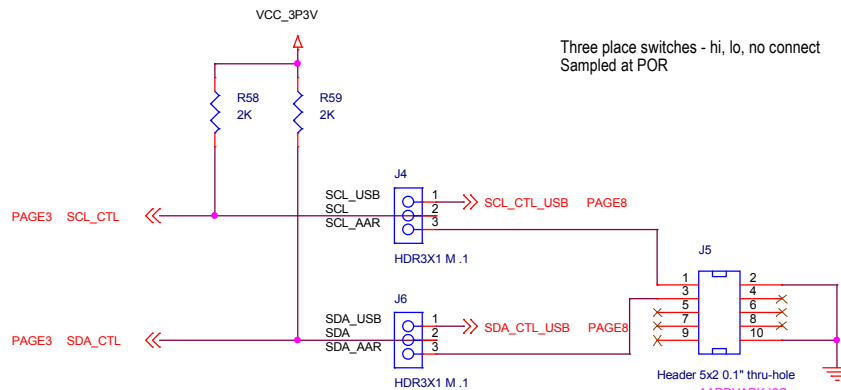
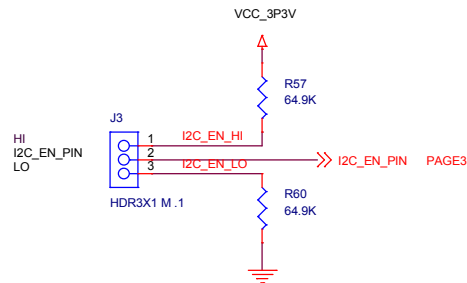


Pop 2K resistors on R45, R46 for TMDS171, DDC on
Pop 47K resistors on R45, R46 for TMDS171, DDC snoop only

TEXAS INSTRUMENTS

TMDS171RGZEV, HDMI OUTPUT

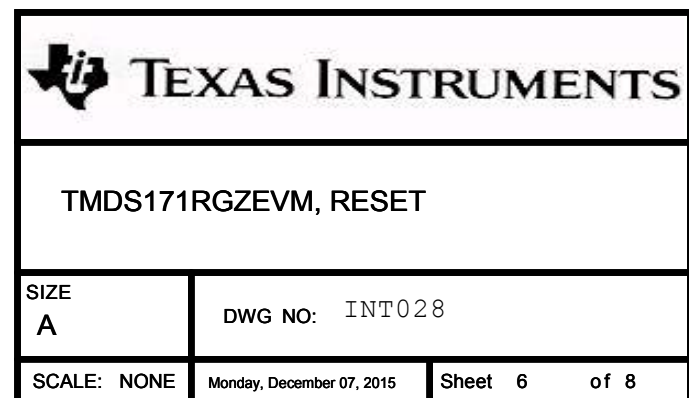
SIZE A	DWG NO: INT028
SCALE: NONE	Monday, December 07, 2015
Sheet 4	of 8



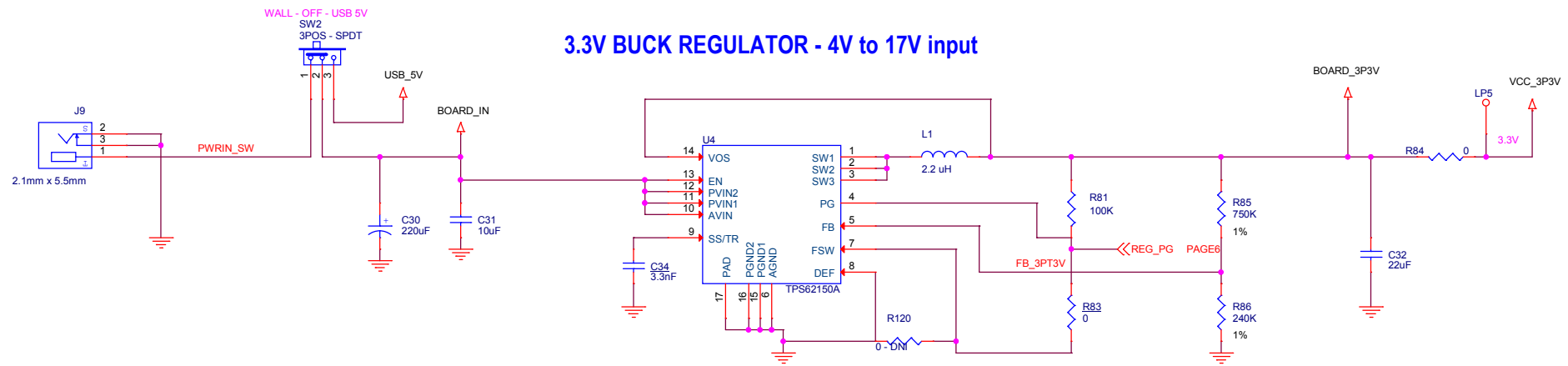
TEXAS INSTRUMENTS

TMD5171RGZEV, SELECT OPTIONS

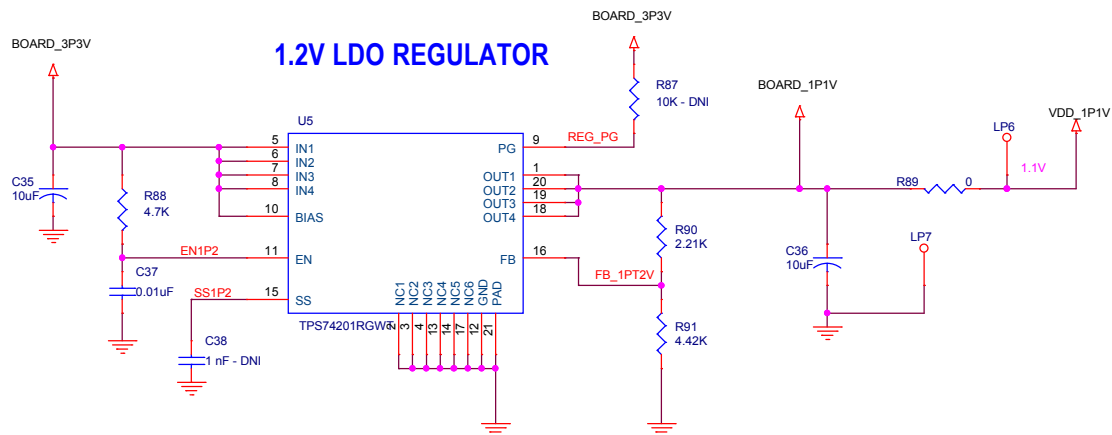
SIZE B	DWG NO: INT028
SCALE: NONE	Monday, December 07, 2015 Sheet 5 of 8



3.3V BUCK REGULATOR - 4V to 17V input

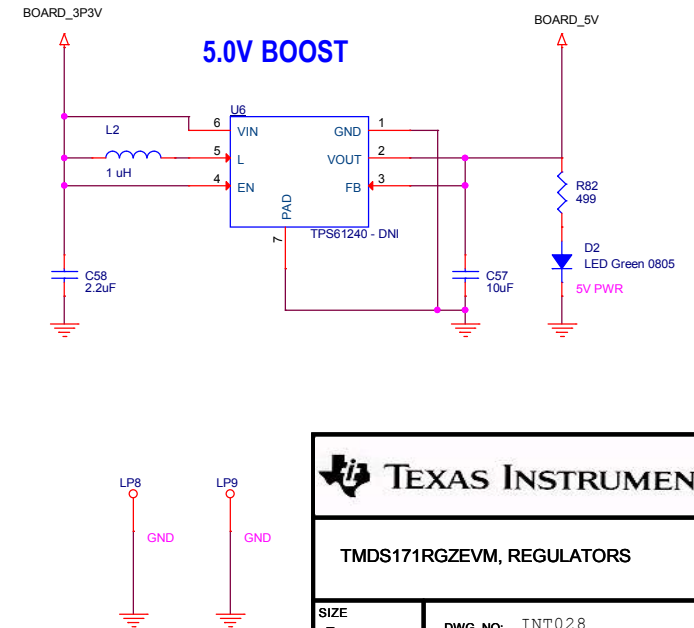


1.2V LDO REGULATOR

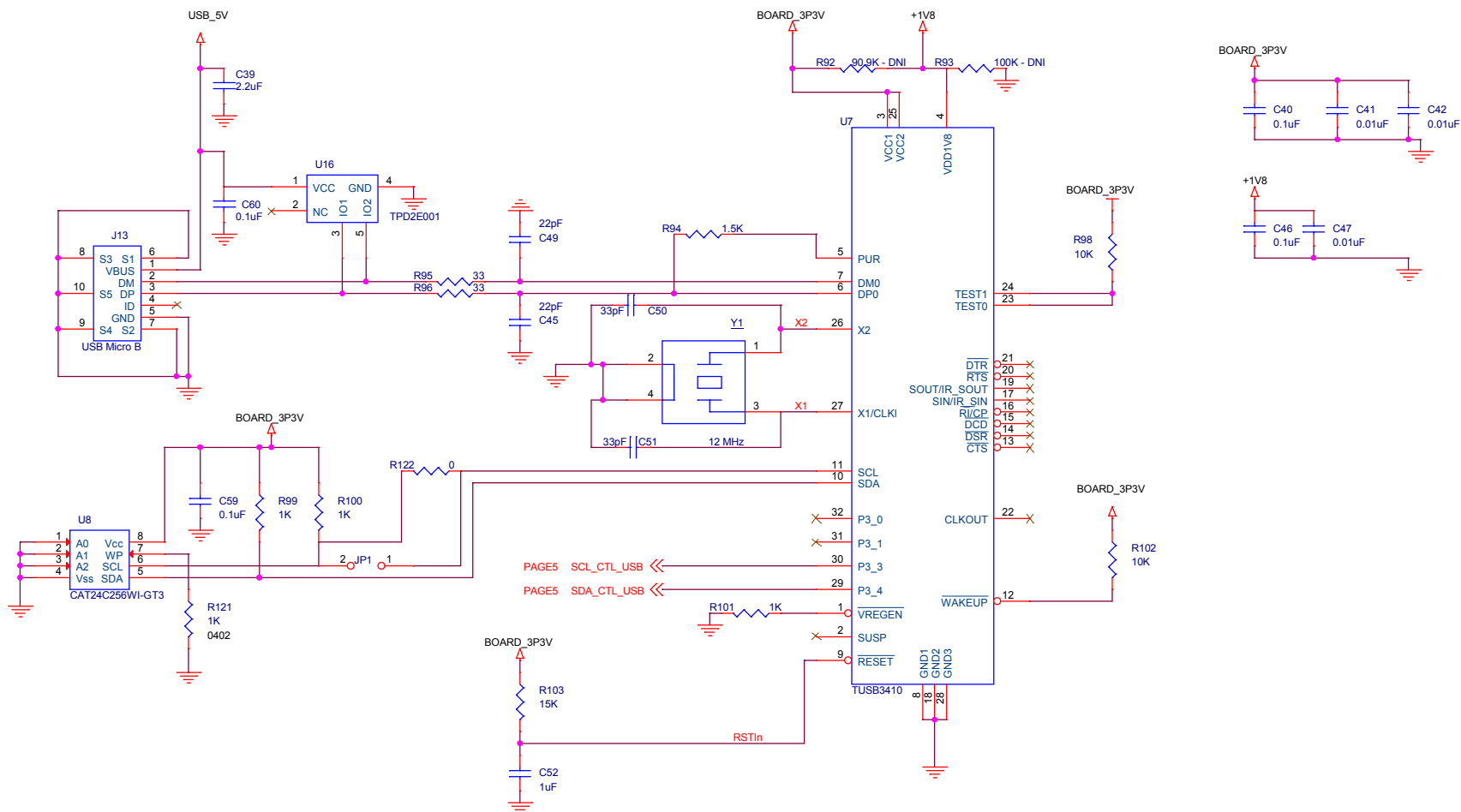


Note for TMDS1x1 products Board 1.1V is set to 1.2V

5.0V BOOST



TMDS171RGZEVM, REGULATORS	
SIZE B	DWG NO: INT028
SCALE: NONE	Monday, December 07, 2015
Sheet 7	of 8



TEXAS INSTRUMENTS

TMS171RGZVM, TUSB3410

SIZE B	DWG NO: INT028	
SCALE: NONE	Monday, December 07, 2015	Sheet 8 of 8