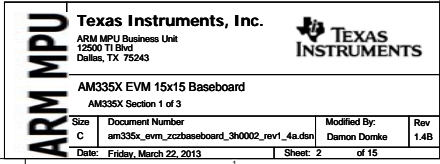


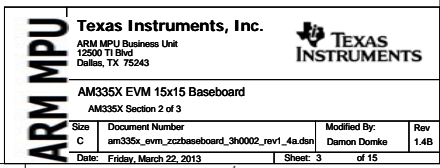
ARM MPU AM335X Base Board ZCZ Package

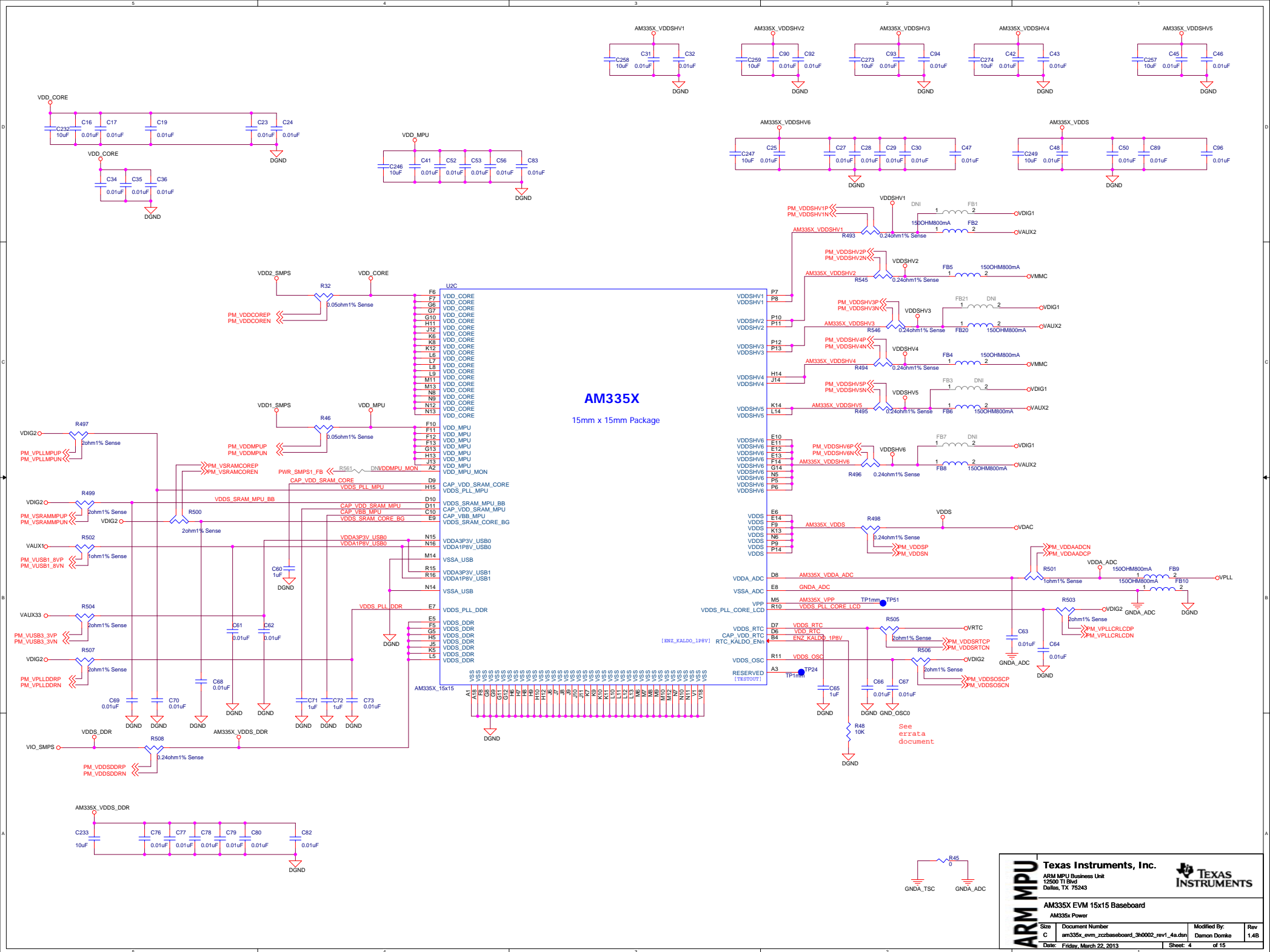
- See the Hardware User Guide for board details
- See the Hardware Implementation Document for design details
- See the PCB Build Specification for PCB Details

PCB1
AM335x 15x15 Base Board Bare PCB

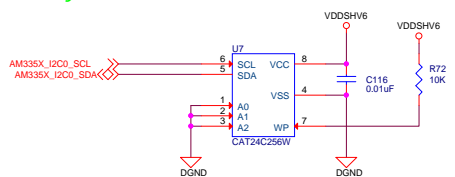
ARM MPU	Texas Instruments, Inc.			
	ARM MPU Business Unit 12500 TI Blvd Dallas, TX 75243			
	AM335X EVM 15x15 Baseboard			
	Title Page			
	Size C	Document Number am335x_evm_zczbaseboard_3h0002_rev1_4a.dsn	Modified By: Damon Domke	Rev 1.4B
Date: Friday, March 22, 2013		Sheet: 1 of 15		



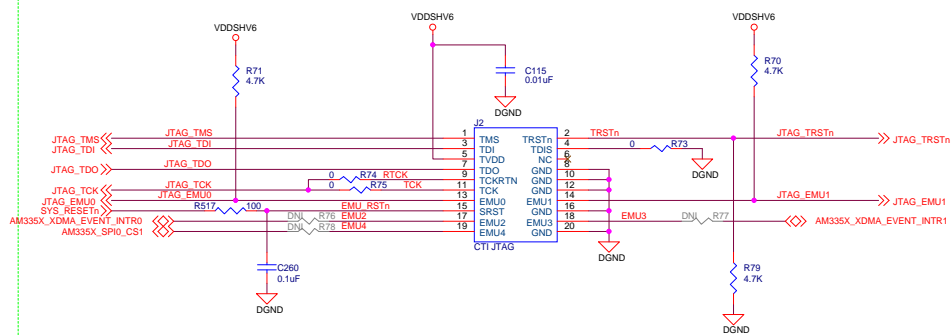




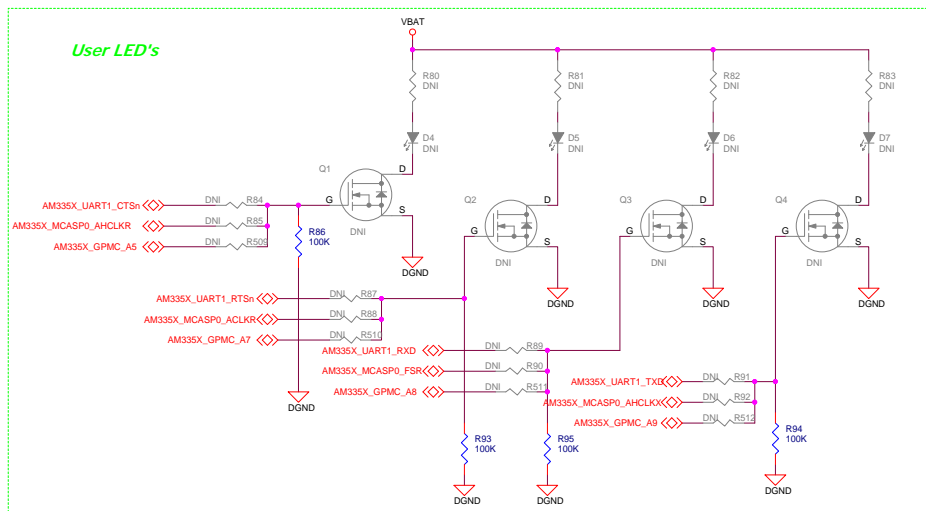
ID Memory



JTAG Connector



User LED's



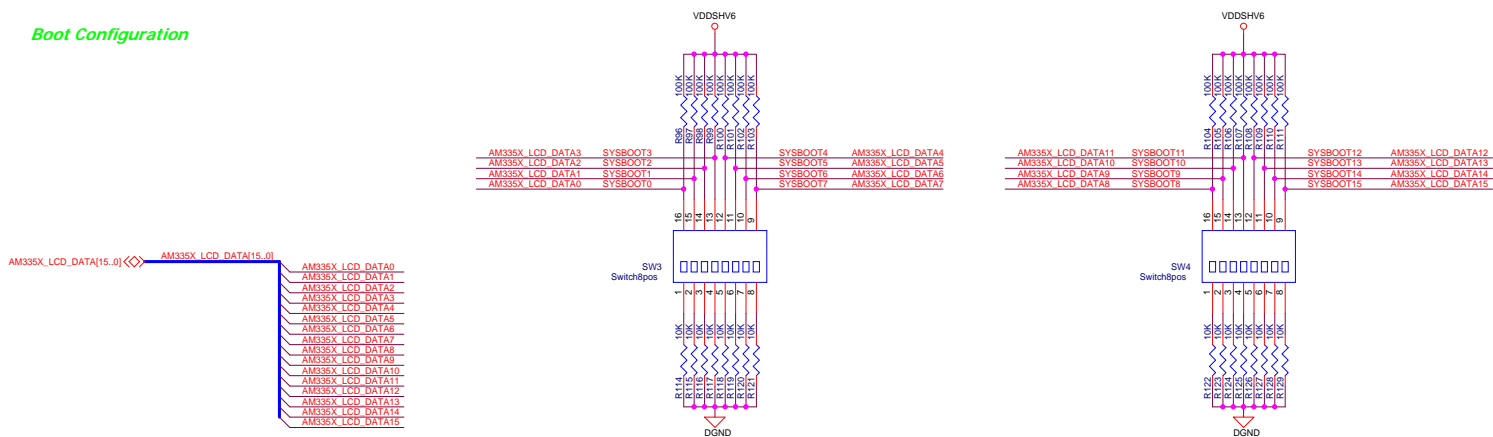
Clockout Measurement Testpoints



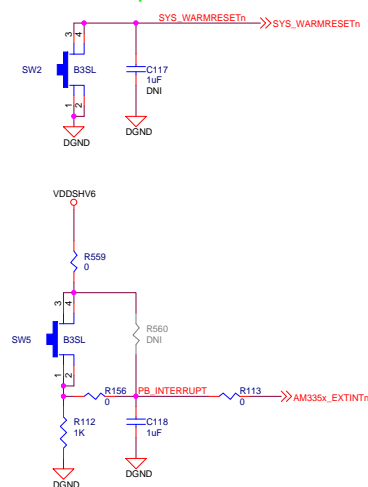
ADC Test



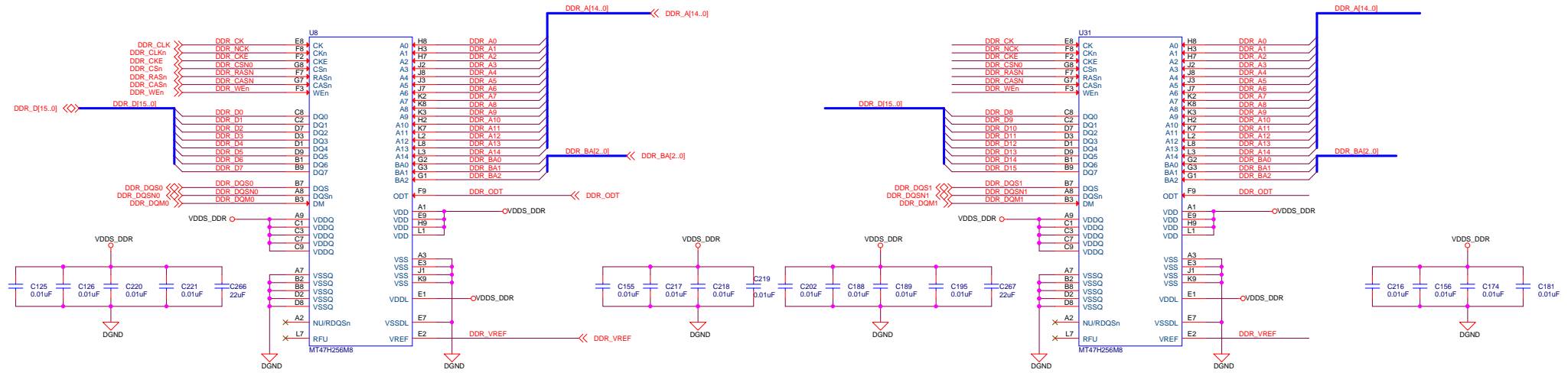
Boot Configuration



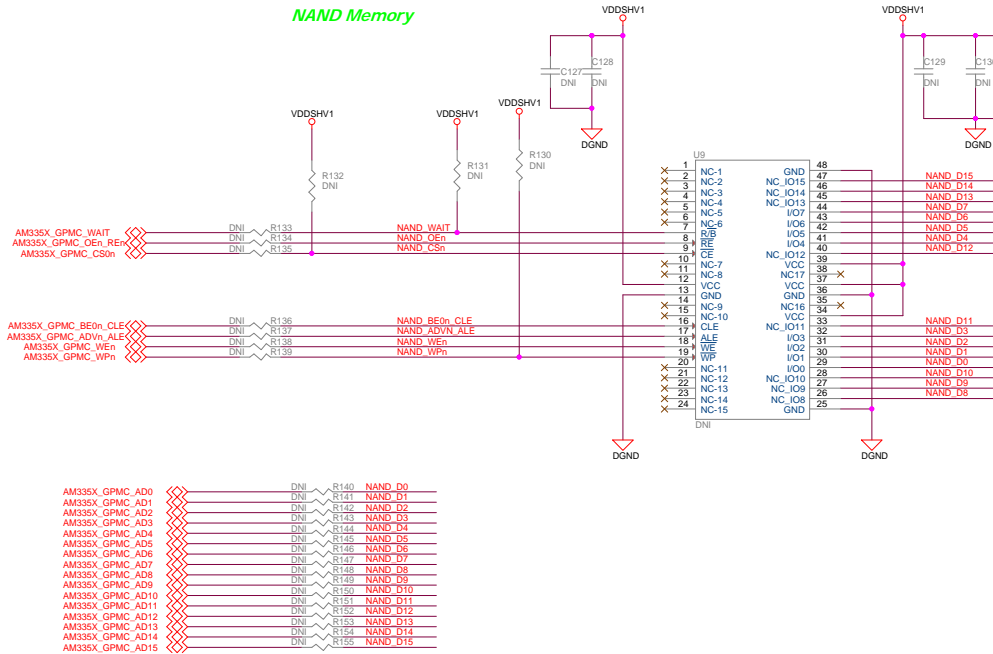
User Reset/Interrupt Switches



DDR2 SDRAM



NAND Memory



ARM MPU

Size

C

Document Number

am335x_evm_zcbaseboard_3h0002_rev1_4a.dsn

Date:

Friday, March 22, 2013

Texas Instruments, Inc.

ARM MPU Business Unit

12500 TI Blvd

Dallas, TX 75243

AM335X EVM 15x15 Baseboard

Memory

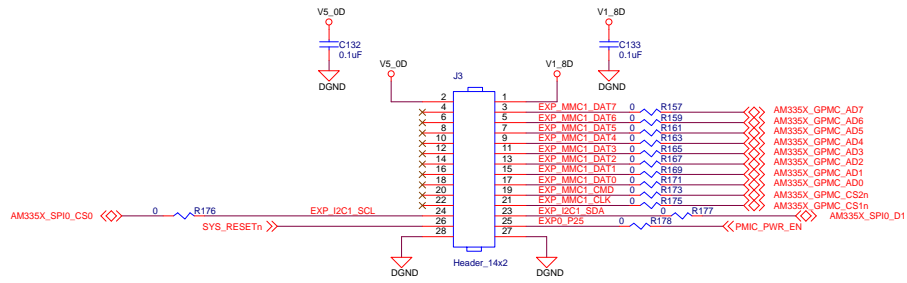
Modified By:

Damon Domke

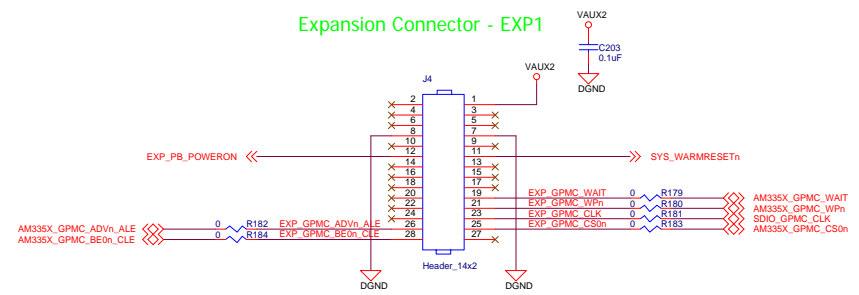
Rev

1.4B

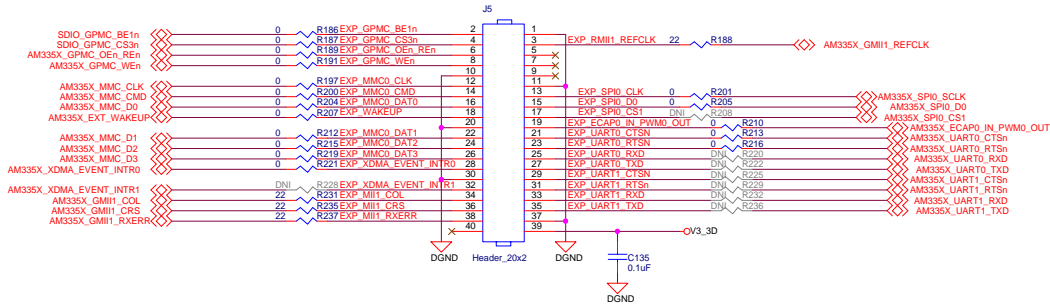
Expansion Connector - EXP0



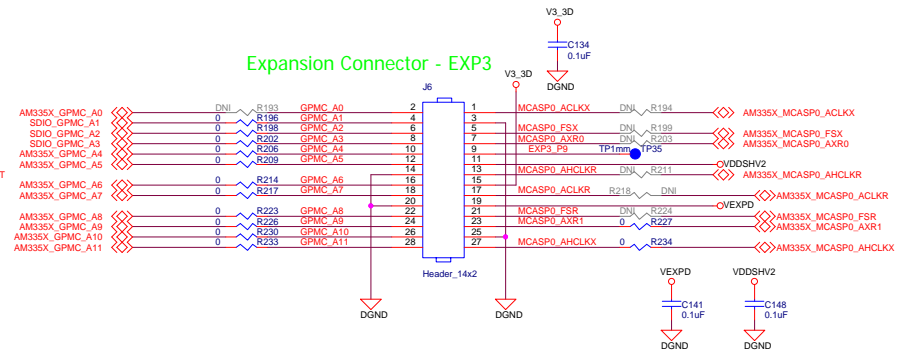
Expansion Connector - EXP1

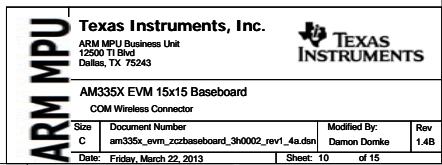


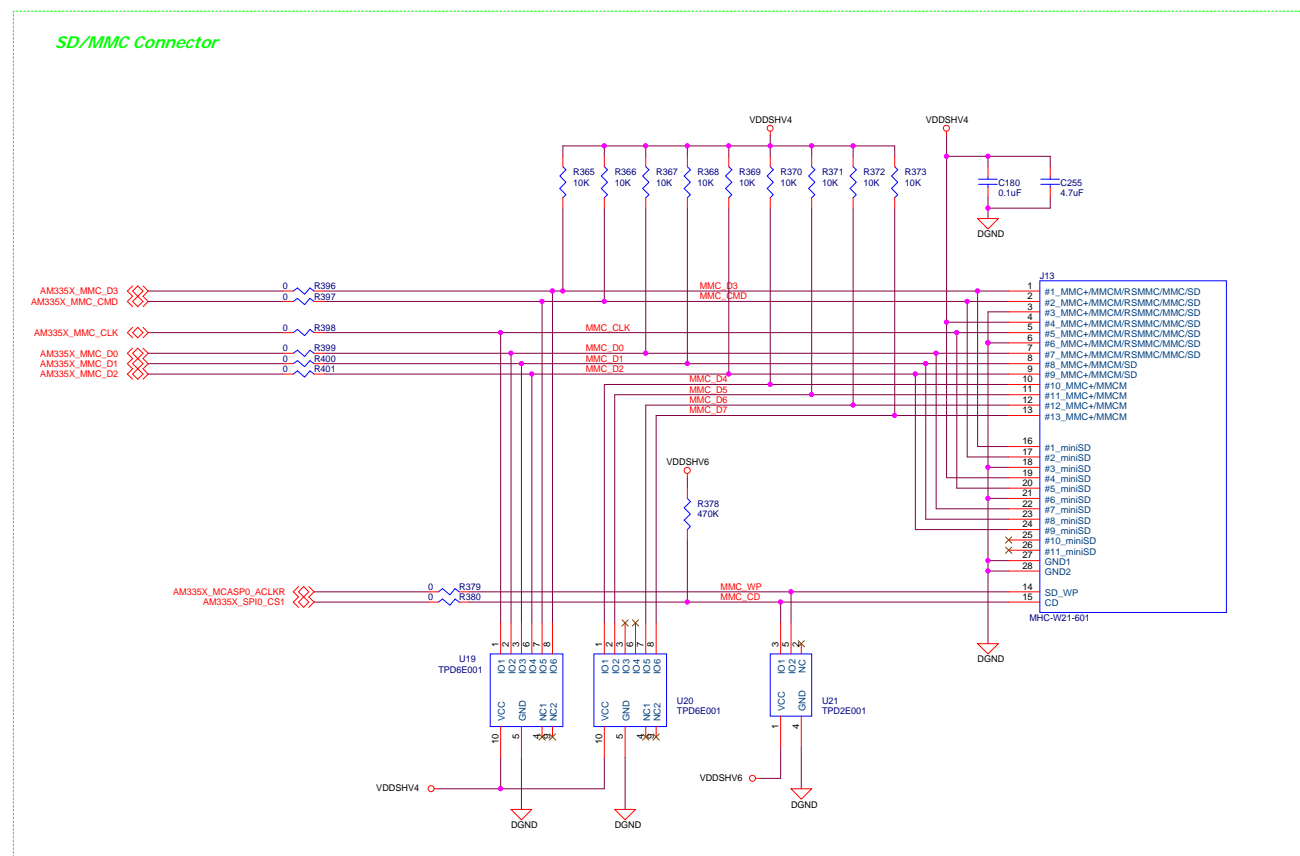
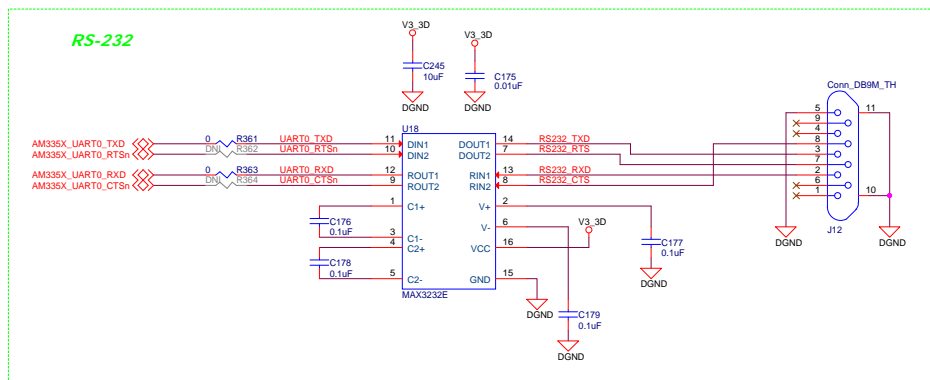
Expansion Connector - EXP2

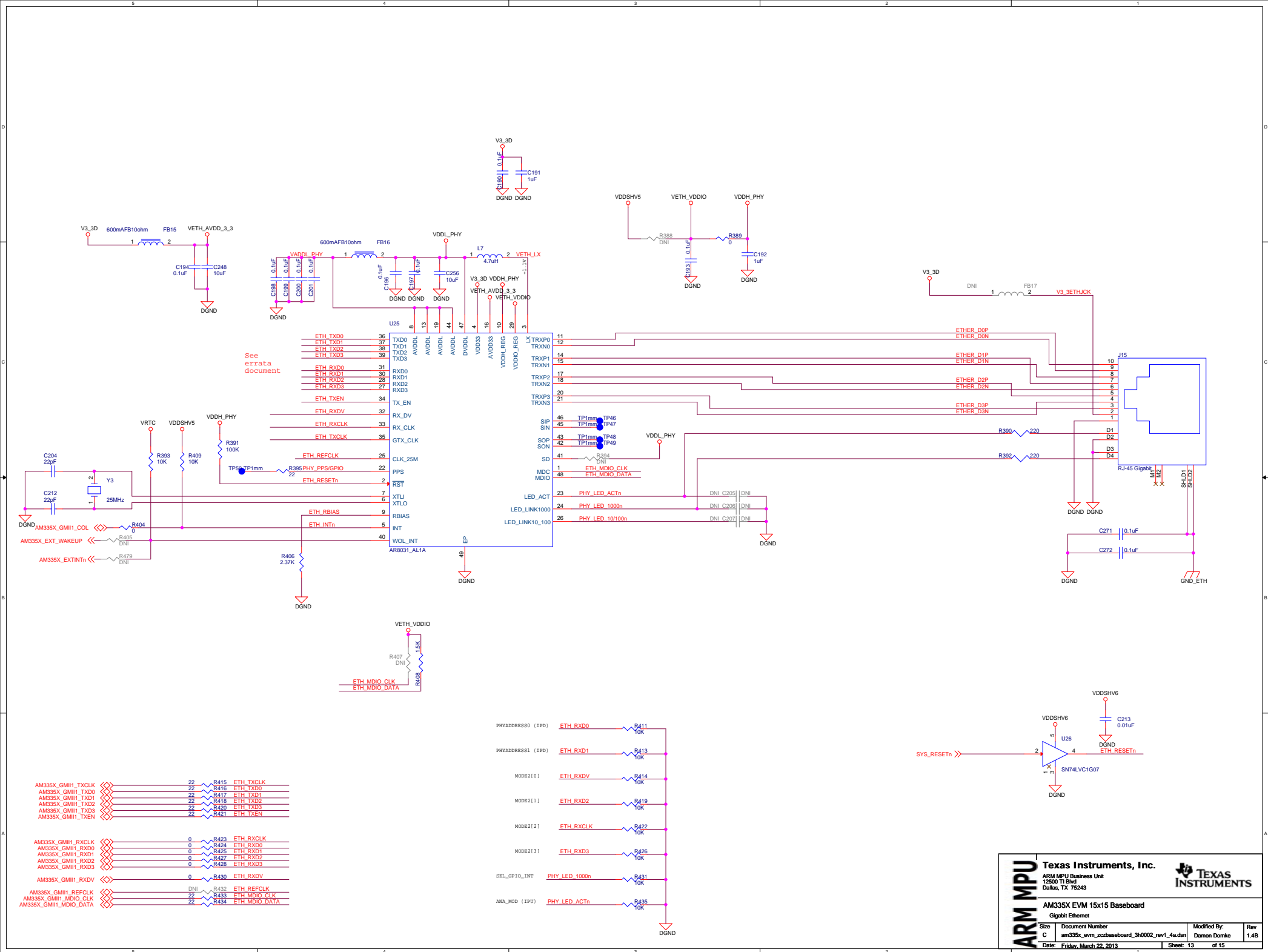


Expansion Connector - EXP3









MAVRK Connector

