

Revision History				
Rev	ECN #	Approved Date	Approved by	Notes
N/A	N/A	N/A	N/A	N/A

A

A

B

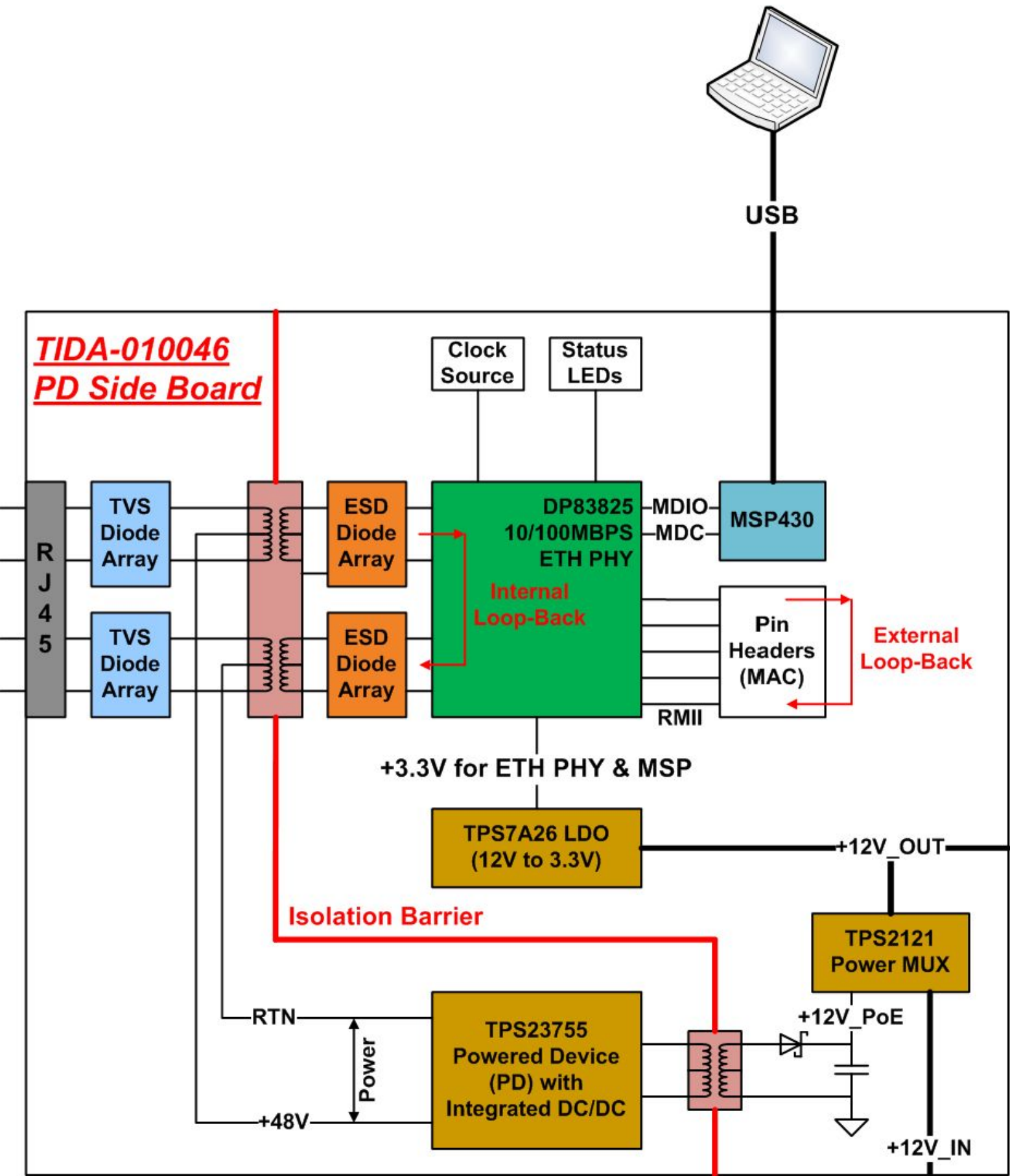
B

C

C

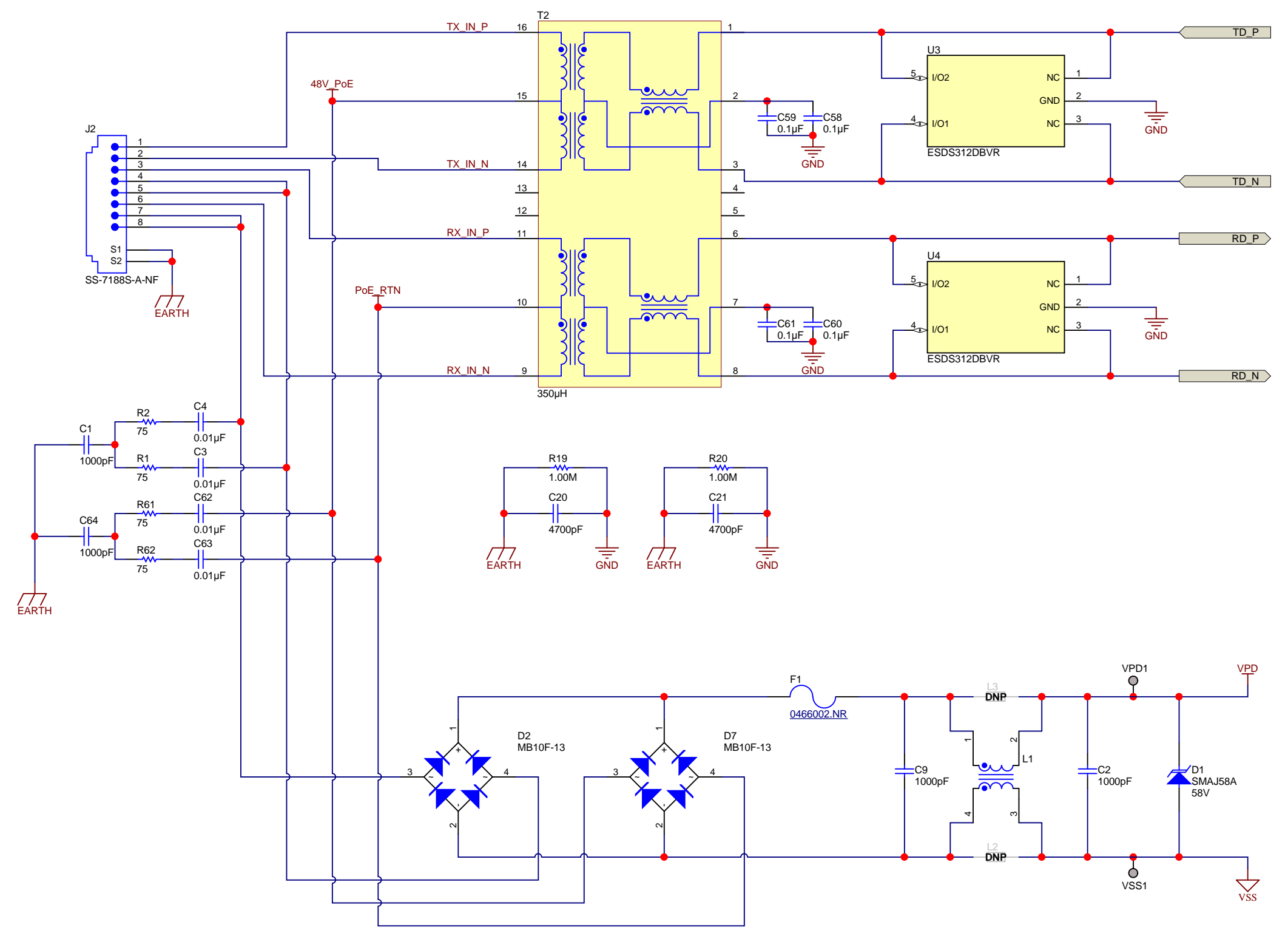
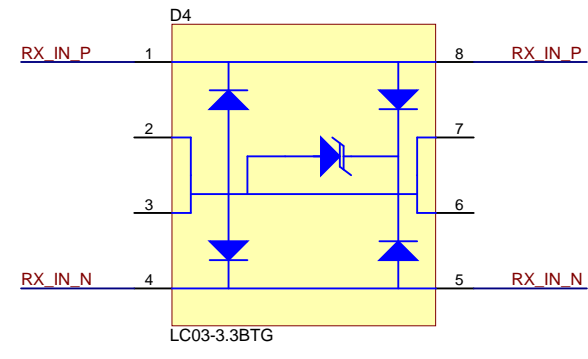
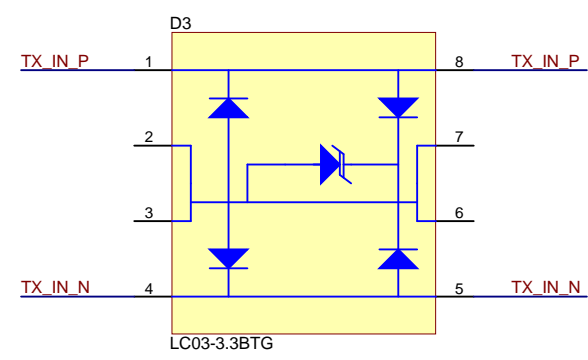
D

D



Texas Instruments and/or its licensors do not warrant the accuracy or completeness of this specification or any information contained therein. Texas Instruments and/or its licensors do not warrant that this design will meet the specifications, will be suitable for your application or fit for any particular purpose, or will operate in an implementation. Texas Instruments and/or its licensors do not warrant that the design is production worthy. You should completely validate and test your design implementation to confirm the system functionality for your application.

Orderable: NA	Designed for: Public Release	Mod. Date: 9/16/2019
TID #: TIDA-010046	Project Title: EMC Compliant 10/100Mbps Ethernet PHY Referen	Sheet: 1 of 6
Number: TIDA-010046	Rev: E1	Sheet Title: TIDA-010046 PD Side Block Diagram
SVN Rev: Version control disabled	Assembly Variant: 001	File: TIDA-010046_PD_Side_BoardE1_CoverSheet_SideB
Drawn By: SHARAD YADAV	Engineer: SHARAD YADAV	Contact: http://www.ti.com/support



Texas Instruments and/or its licensors do not warrant the accuracy or completeness of this specification or any information contained therein. Texas Instruments and/or its licensors do not warrant that this design will meet the specifications, will be suitable for your application or fit for any particular purpose, or will operate in an implementation. Texas Instruments and/or its licensors do not warrant that the design is production worthy. You should completely validate and test your design implementation to confirm the system functionality for your application.

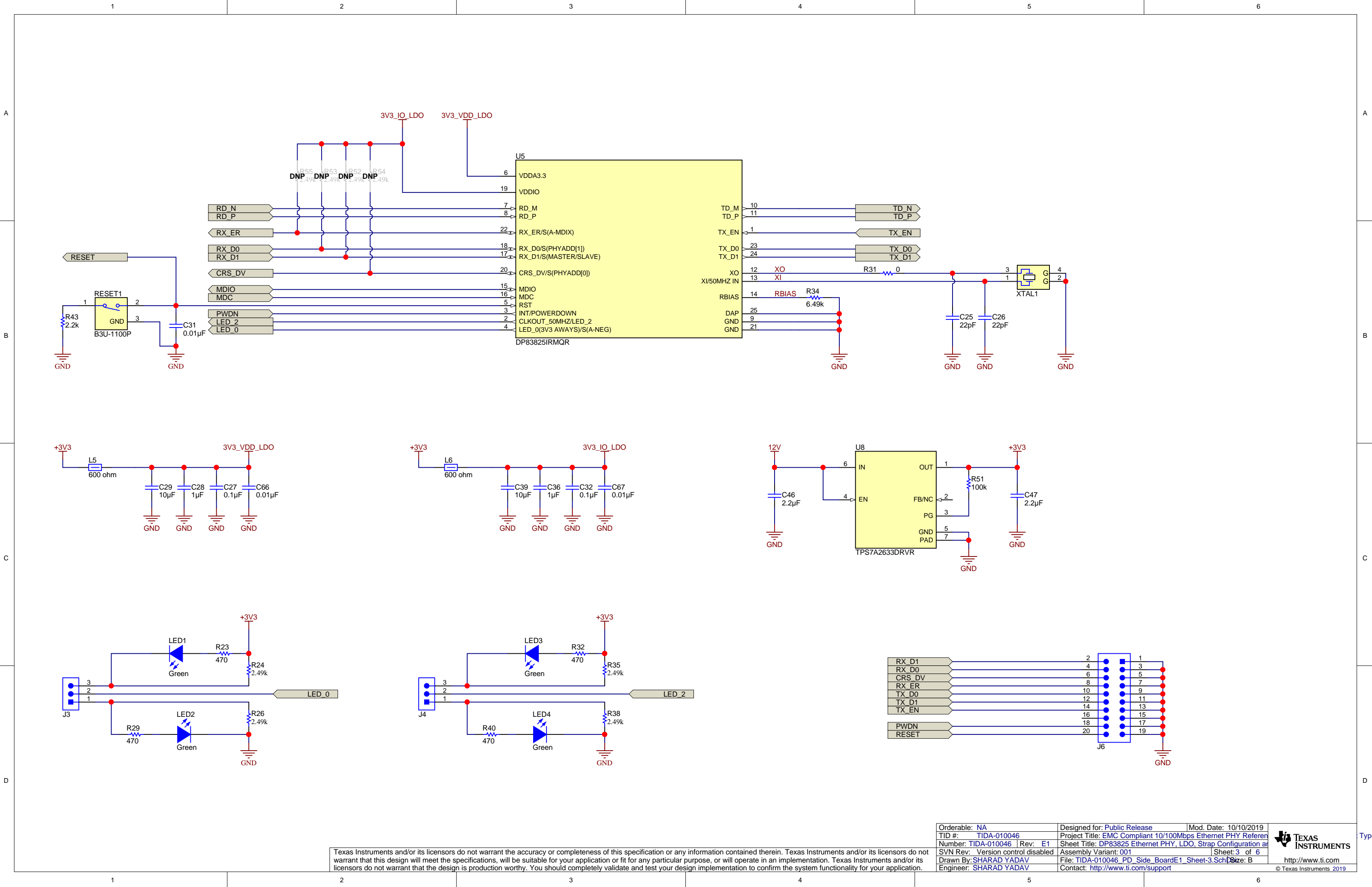
Orderable: NA	Designed for: Public Release	Mod. Date: 10/1/2019
TID #: TIDA-010046	Project Title: EMC Compliant 10/100Mbps Ethernet PHY Referen	
Number: TIDA-010046	Rev: E1	Sheet Title: RJ45_Termination, Protection and PoE
SVN Rev: Version control disabled	Assembly Variant: 001	Sheet: 2 of 6
Drawn By: SHARAD YADAV	File: TIDA-010046_PD_Side_BoardE1_Sheet-2.SchDoc	Size: B
Engineer: SHARAD YADAV	Contact: http://www.ti.com/support	

TEXAS INSTRUMENTS

http://www.ti.com

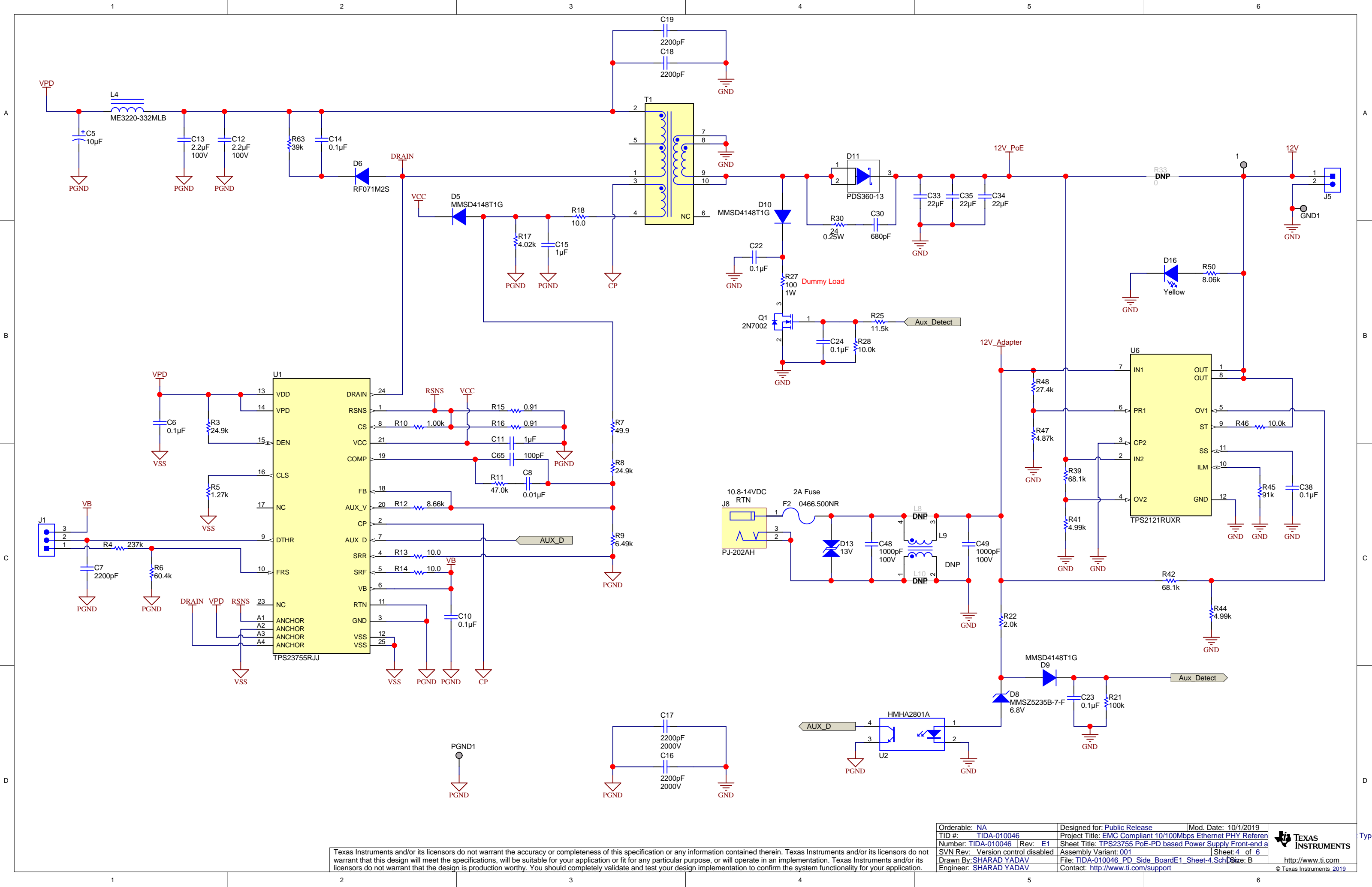
© Texas Instruments 2019

Type-1



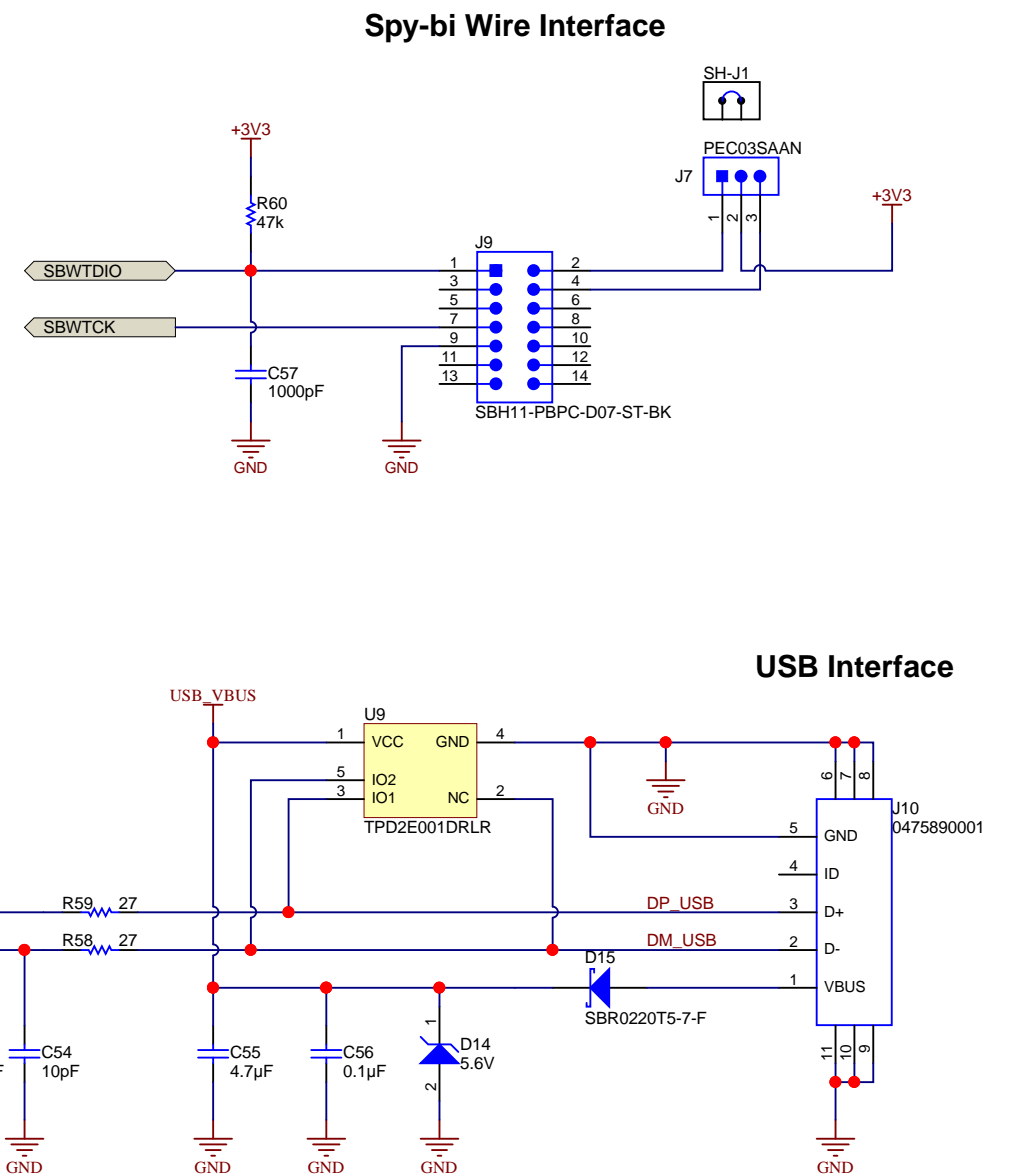
Texas Instruments and/or its licensors do not warrant the accuracy or completeness of this specification or any information contained therein. Texas Instruments and/or its licensors do not warrant that this design will meet the specifications, will be suitable for your application or fit for any particular purpose, or will operate in an implementation. Texas Instruments and/or its licensors do not warrant that the design is production worthy. You should completely validate and test your design implementation to confirm the system functionality for your application.

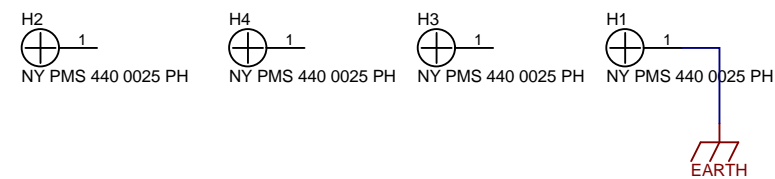
Orderable: NA	Designed for: Public Release	Mod. Date: 10/10/2019
TID #: TIDA-010046	Project Title: EMC Compliant 10/100Mbps Ethernet PHY Referen	
Number: TIDA-010046	Rev: E1	Sheet Title: DP83825 Ethernet PHY, LDO, Strap Configuration ar
SVN Rev: Version control disabled	Assembly Variant: 001	Sheet: 3 of 6
Drawn By: SHARAD YADAV	File: TIDA-010046_PD_Side_BoardE1_Sheet-3.Sch	Size: B
Engineer: SHARAD YADAV	Contact: http://www.ti.com/support	



Texas Instruments and/or its licensors do not warrant the accuracy or completeness of this specification or any information contained therein. Texas Instruments and/or its licensors do not warrant that this design will meet the specifications, will be suitable for your application or fit for any particular purpose, or will operate in an implementation. Texas Instruments and/or its licensors do not warrant that the design is production worthy. You should completely validate and test your design implementation to confirm the system functionality for your application.

Orderable: NA	Designed for: Public Release	Mod. Date: 10/1/2019
TID #: TIDA-010046	Project Title: EMC Compliant 10/100Mbps Ethernet PHY Referen	
Number: TIDA-010046	Rev: E1	Sheet Title: TPS23755 PoE-PD based Power Supply Front-end a
SVN Rev: Version control disabled	Assembly Variant: 001	Sheet: 4 of 6
Drawn By: SHARAD YADAV	File: TIDA-010046_PD_Side_BoardE1_Sheet-4_Sch	Size: B
Engineer: SHARAD YADAV	Contact: http://www.ti.com/support	





PCB Number: TIDA-010046
PCB Rev: E1

PCB
LOGO
WEEE logo

PCB
LOGOPCB
LOGO

PCB
LOGO
Logo4

Label Assembly Note
This Assembly Note is for PCB labels only


ZZ4

Assembly Note

This Assembly Note will show in the PcbDoc and associated outputs

ZZ1
Assembly Note
 This Assembly Note will show in the PcbDoc and associated outputs

ZZ3
Assembly Note
 This Assembly Note will show in the PcbDoc and associated outputs

Orderable: NA	Designed for: Public Release	Mod. Date: 9/16/2019	
TID #: TIDA-010046	Project Title: EMC Compliant 10/100Mbps Ethernet PHY Referen		
Number: TIDA-010046 Rev: E1	Sheet Title: Hardware		
SVN Rev: Version control disabled	Assembly Variant: 001	Sheet: 6 of 6	
Drawn By: SHARAD YADAV	File: TIDA-010046_PD_Side_BoardE1_Hardware.Sch Size: B		
Engineer: SHARAD YADAV	Contact: http://www.ti.com/support		http://www.ti.com © Texas Instruments 2019

Texas Instruments and/or its licensors do not warrant the accuracy or completeness of this specification or any information contained therein. Texas Instruments and/or its licensors do not warrant that this design will meet the specifications, will be suitable for your application or fit for any particular purpose, or will operate in an implementation. Texas Instruments and/or its licensors do not warrant that the design is production worthy. You should completely validate and test your design implementation to confirm the system functionality for your application.