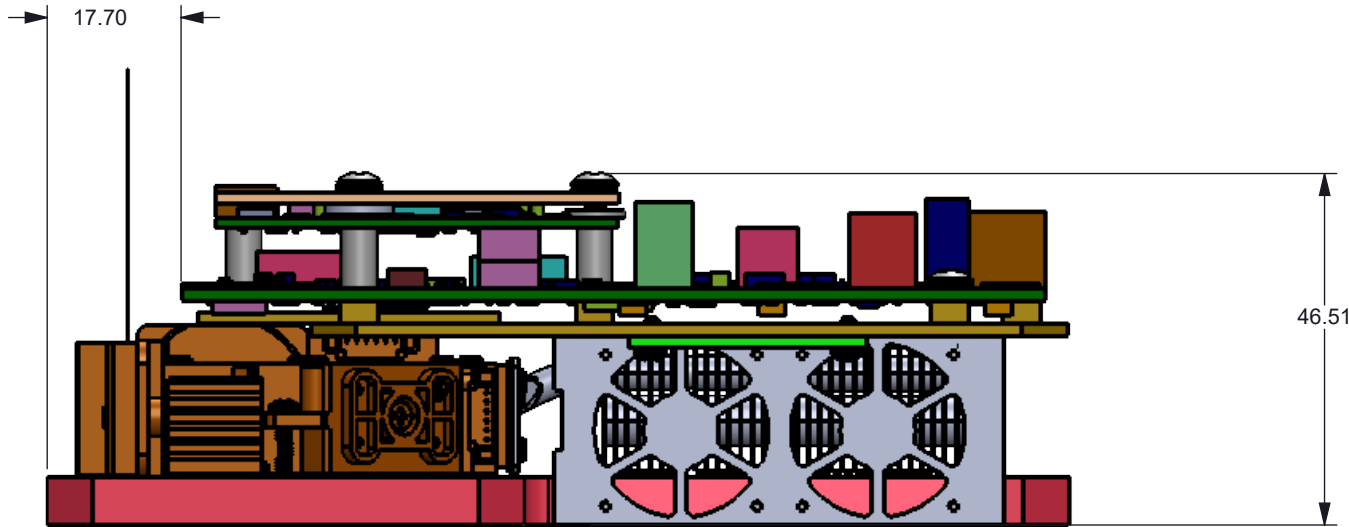
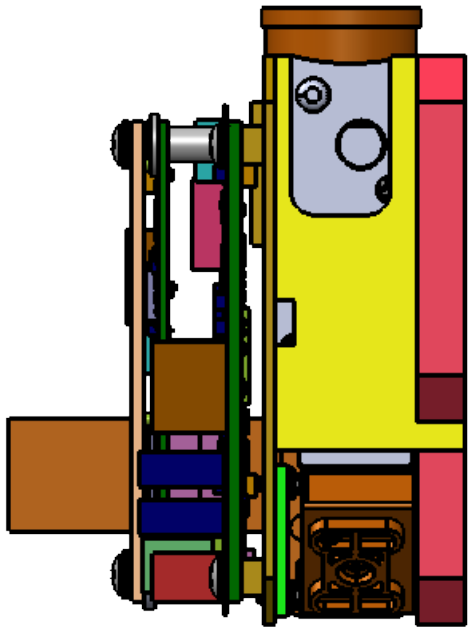
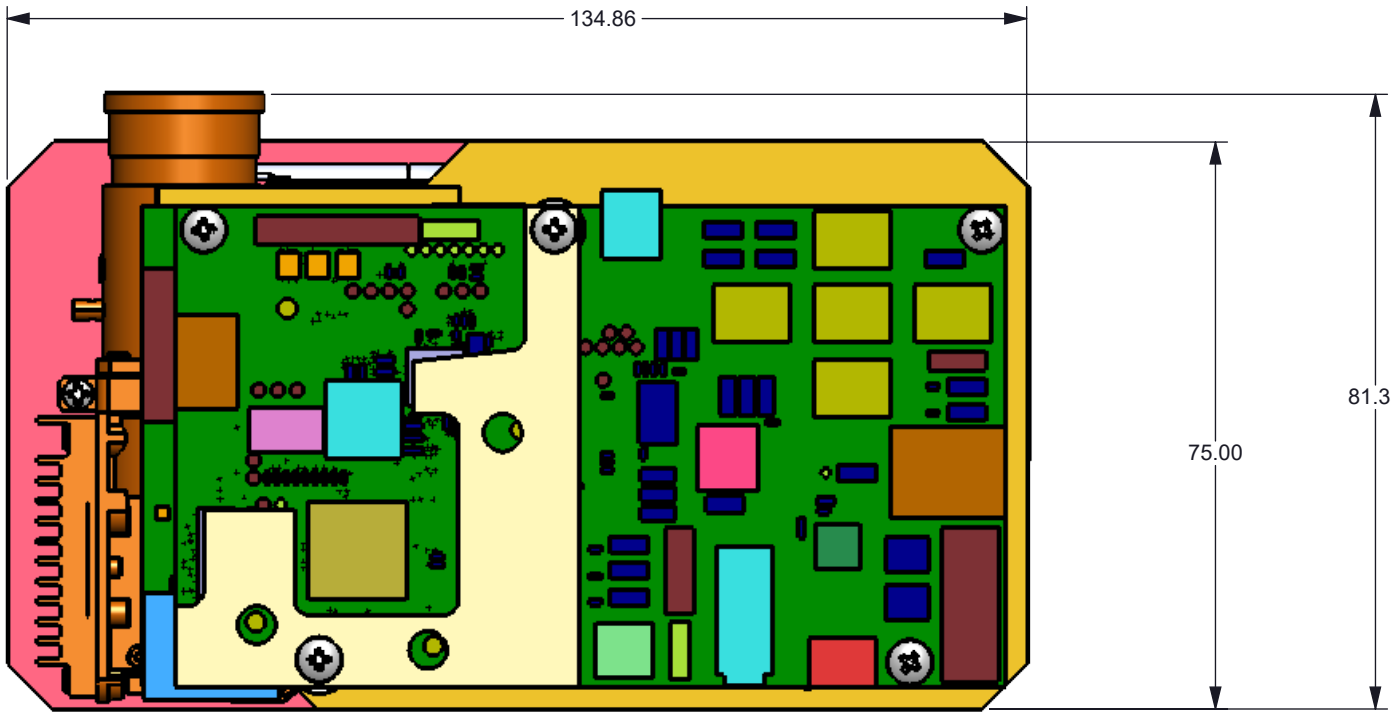


NOTES: UNLESS OTHERWISE SPECIFIED:

© COPYRIGHT 2014 TEXAS INSTRUMENTS
UNPUBLISHED, ALL RIGHTS RESERVED

REVISIONS			
REV	DESCRIPTION	DATE	BY
---	INITIAL RELEASE	09-11-2014	SS
A	ADDED THERMAL PADS, M1.7 SCREWS, UPDATED M3 WASHER	10-28-2014	SS
B	UPDATED MAIN AND DISPLAY BOARD	2/20/2018	SS
C	ADDED ITEM 21, ITEM 18 QTY WAS 2, REMOVED ITEM 7, ITEM 12 WAS DAUGHTER-CARD-CLAMP-ASM	4/25/2018	SS
D	ITEM 9 WAS 94669A103 AND NOT ROHS COMPLIANT	5/7/2018	SS
E	ADDED ITEM 12 TO BOM CALLOUT ON SHEET 2	5/30/2018	SS
F	UPDATED ITEM 2 PART NUMBER	10/2/2019	SS
G	UPDATED ITEM 2 PART NUMBER AND DESCRIPTION	6/11/2021	SS



UNLESS OTHERWISE SPECIFIED

- DIMENSIONS ARE IN MILLIMETERS
- TOLERANCES: ANGLES $\pm 1^\circ$
2 PLACE DECIMALS ± 0.25
1 PLACE DECIMALS ± 0.50
- DIMENSIONAL LIMITS APPLY BEFORE PROCESSES
- INTERPRET DIMENSIONS IN ACCORDANCE WITH ASME Y14.5M-1994
- REMOVE ALL BURRS AND SHARP EDGES
- PARENTHETICAL INFO FOR REF ONLY

DWN STEVE SMITH	DATE 8/19/2014
Engr STEVE SMITH	8/19/2014
CQE/QA	
CM	
Apprvd	



DLP3010 LIGHT CONTROL EVM

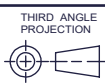
SIZE
B

DWG NO
MCH034

REV
G

SCALE 1:2

SHEET 1 OF 2



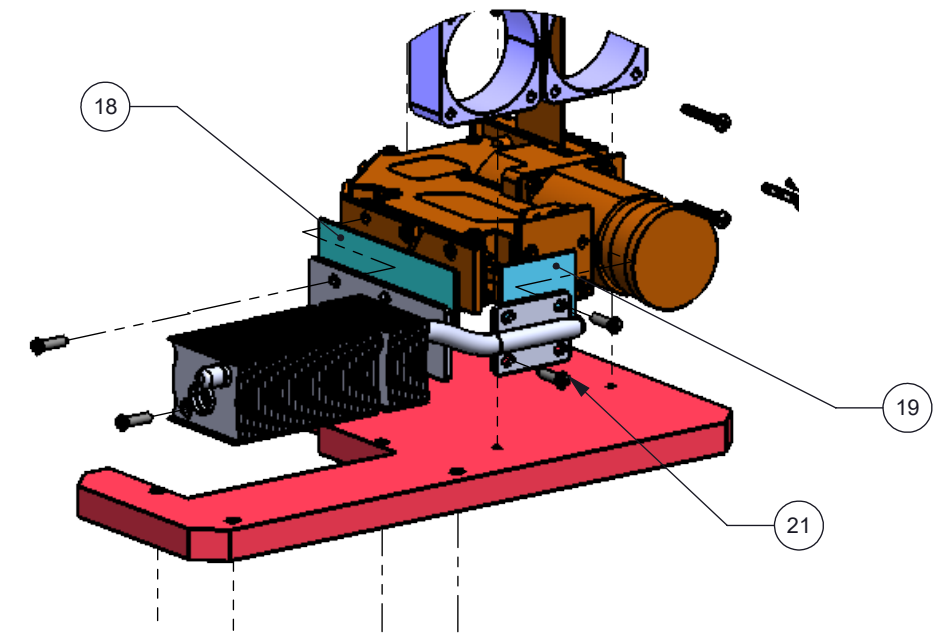
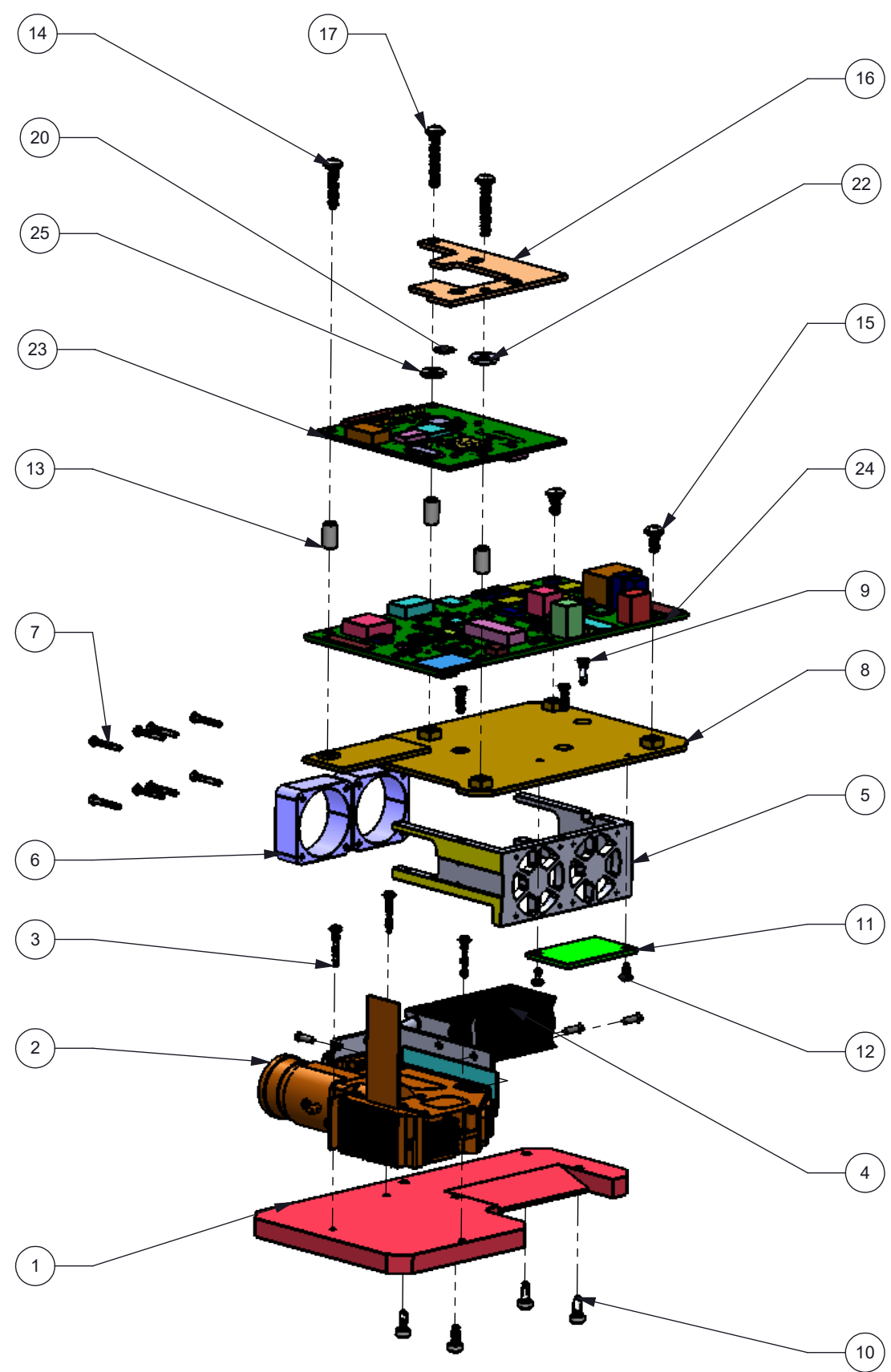
NEXT ASSY	USED ON
APPLICATION	

D

C

B

A



D

C

B

A

ITEM NO.	PART NUMBER	DESCRIPTION	QTY.
1	MCH022	ENGINE BASE	1
2	M6T(LC) 800.0268.00	ePROTECH M6T(LC) P3 720P ENGINE	1
3	90116A022	M2 X 12MM LONG PAN HEAD SCREW (McMaster-Carr)	3
4	P5_32FIN_ASM	ePROTECH PT3 720P DISPLAY ENGINE HEATSINK	1
5	MCH023	3010-EVM-HEATSINK-COVER	1
6	259-1557-ND	FAN, 25 X 10MM, 5VDC (DIGIKEY)	2
7	92000A007	M1.6 X 12MM LONG PAN HEAD SCREW (McMaster-Carr)	8
8	MCH024	PCB PLATE	1
9	91801A137	M2.5 X 8MM LONG FLAT HEAD SCREW (McMaster-Carr)	3
10	92290A056	M2.5 X 6MM LONG SHCS (McMaster-Carr)	4
11	DLP023	DLP023 LED ADAPTER BOARD	1
12	90116A008	M2 X 4MM LONG PAN HEAD SCREW (McMaster-Carr)	2
13	92871A179	M3 X 8MM LONG SPACER (McMaster-Carr)	3
14	90116A160	M3 X 14MM LONG PAN HEAD SCREW (McMaster-Carr)	1
15	90116A151	M3 X 6MM LONG PAN HEAD SCREW (McMaster-Carr)	2
16	MCH025	CARD CLAMP	1
17	90116A163	M3 X 18MM LONG PAN HEAD SCREW (McMaster-Carr)	2
18	3010-EVM-RG-THERMAL-PAD	RED GREEN THERMAL PAD	1
19	3010-EVM-B-THERMAL-PAD	BLUE THERMAL PAD	1
20	MCH033	PAD2005 THERMAL PAD	1
21	20595	M1.7 X 6MM FLAT HEAD SCREW (MetricScrews.us)	4
22	032030011407	WASHER, FLAT, M3 PLASTIC (Digi-Key)	1
23	DLP017-002	DISPLAY BOARD	1
24	DLP016-002	MAIN BOARD	1
25	95610A330	WASHER, FLAT, M3 PLASTIC (McMaster-Carr)	1