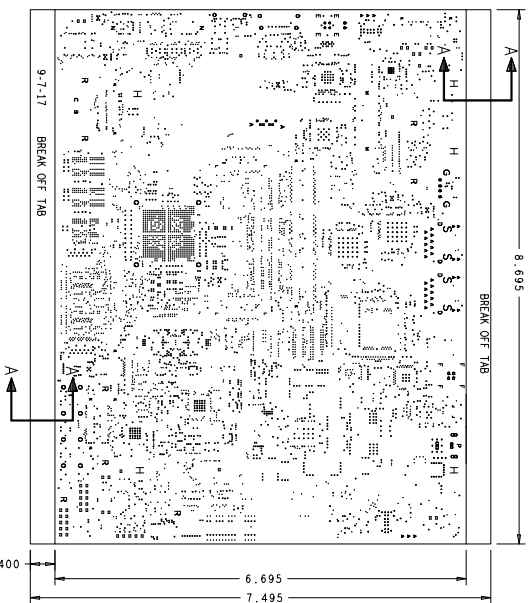
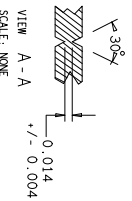


- TSLK
- SMC
- LAYER 1
- LAYER 2
- LAYER 3
- LAYER 4
- LAYER 5
- LAYER 6
- LAYER 7
- LAYER 8
- LAYER 9
- LAYER 10
- LAYER 11
- LAYER 12
- LAYER 13
- LAYER 14
- LAYER 15
- LAYER 16
- SMS
- BULK

LAYER SCHEDULE
SCALE: NONE



- NOTES: UNLESS OTHERWISE SPECIFIED
1. TOTAL BOARD THICKNESS SHALL BE .080 +/- 10% INCHES. ALL MATERIAL SHALL BE NEMA GRADE FR-4 OR EQUIVALENT. (Tg>=170 DEG. C)
 2. REFER TO STACKUP DRAWING FOR COPPER WEIGHT. AVERAGE COPPER ON THE WALL OF THE PLATED HOLE SHALL BE PER IPC CLASS 2.
 3. MINIMUM CLEARANCE ON THE BOARD SHALL BE 3.0 MILS.
 4. MINIMUM TRACE WIDTH ON THE BOARD SHALL BE 3.0 MILS.
 5. SOLDERMASK ON BOTH SIDES OF THE BOARD SHALL BE 5.0 MILS. C.P. LPI. COLOR GREEN.
 6. PLATED THRU HOLE SIZE TOLERANCES SHALL BE +/- .003 INCH. UNPLATED THRU HOLE SIZE TOLERANCES SHALL BE +/- .002 INCH. DRC'S MUST BE RUN ON THE GERBERS BEFORE BUILDING BOARDS UNLESS PRIOR APPROVAL IS GIVEN IN WRITING.
 7. FINISHED BOARD SHALL BE FREE OF BURRS ON EDGES.
 8. SURFACE FINISH SHALL BE IMMERSION GOLD.
 9. IMPEDANCE CONTROL: REFER TO STACKUP DRAWING FOR IMPEDANCE CONTROL.



ALL UNITS ARE IN MILS

FIGURE	SIZE	PLATED	QTY	TOL	NOTE
1	8.0	PLATED	3272		
2	10.0	PLATED	2311		
3	12.0	PLATED	2311		
4	14.0	PLATED	2311		
5	16.0	PLATED	2311		
6	18.0	PLATED	2311		
7	20.0	PLATED	2311		
8	22.0	PLATED	2311		
9	24.0	PLATED	2311		
10	26.0	PLATED	2311		
11	28.0	PLATED	2311		
12	30.0	PLATED	2311		
13	32.0	PLATED	2311		
14	34.0	PLATED	2311		
15	36.0	PLATED	2311		
16	38.0	PLATED	2311		
17	40.0	PLATED	2311		
18	42.0	PLATED	2311		
19	44.0	PLATED	2311		
20	46.0	PLATED	2311		
21	48.0	PLATED	2311		
22	50.0	PLATED	2311		
23	52.0	PLATED	2311		
24	54.0	PLATED	2311		
25	56.0	PLATED	2311		
26	58.0	PLATED	2311		
27	60.0	PLATED	2311		
28	62.0	PLATED	2311		
29	64.0	PLATED	2311		
30	66.0	PLATED	2311		
31	68.0	PLATED	2311		
32	70.0	PLATED	2311		
33	72.0	PLATED	2311		
34	74.0	PLATED	2311		
35	76.0	PLATED	2311		
36	78.0	PLATED	2311		
37	80.0	PLATED	2311		
38	82.0	PLATED	2311		
39	84.0	PLATED	2311		
40	86.0	PLATED	2311		
41	88.0	PLATED	2311		
42	90.0	PLATED	2311		
43	92.0	PLATED	2311		
44	94.0	PLATED	2311		
45	96.0	PLATED	2311		
46	98.0	PLATED	2311		
47	100.0	PLATED	2311		
48	102.0	PLATED	2311		
49	104.0	PLATED	2311		
50	106.0	PLATED	2311		
51	108.0	PLATED	2311		
52	110.0	PLATED	2311		
53	112.0	PLATED	2311		
54	114.0	PLATED	2311		
55	116.0	PLATED	2311		
56	118.0	PLATED	2311		
57	120.0	PLATED	2311		
58	122.0	PLATED	2311		
59	124.0	PLATED	2311		
60	126.0	PLATED	2311		
61	128.0	PLATED	2311		
62	130.0	PLATED	2311		
63	132.0	PLATED	2311		
64	134.0	PLATED	2311		
65	136.0	PLATED	2311		
66	138.0	PLATED	2311		
67	140.0	PLATED	2311		
68	142.0	PLATED	2311		
69	144.0	PLATED	2311		
70	146.0	PLATED	2311		
71	148.0	PLATED	2311		
72	150.0	PLATED	2311		
73	152.0	PLATED	2311		
74	154.0	PLATED	2311		
75	156.0	PLATED	2311		
76	158.0	PLATED	2311		
77	160.0	PLATED	2311		
78	162.0	PLATED	2311		
79	164.0	PLATED	2311		
80	166.0	PLATED	2311		
81	168.0	PLATED	2311		
82	170.0	PLATED	2311		
83	172.0	PLATED	2311		
84	174.0	PLATED	2311		
85	176.0	PLATED	2311		
86	178.0	PLATED	2311		
87	180.0	PLATED	2311		
88	182.0	PLATED	2311		
89	184.0	PLATED	2311		
90	186.0	PLATED	2311		
91	188.0	PLATED	2311		
92	190.0	PLATED	2311		
93	192.0	PLATED	2311		
94	194.0	PLATED	2311		
95	196.0	PLATED	2311		
96	198.0	PLATED	2311		
97	200.0	PLATED	2311		
98	202.0	PLATED	2311		
99	204.0	PLATED	2311		
100	206.0	PLATED	2311		
101	208.0	PLATED	2311		
102	210.0	PLATED	2311		
103	212.0	PLATED	2311		
104	214.0	PLATED	2311		
105	216.0	PLATED	2311		
106	218.0	PLATED	2311		
107	220.0	PLATED	2311		
108	222.0	PLATED	2311		
109	224.0	PLATED	2311		
110	226.0	PLATED	2311		
111	228.0	PLATED	2311		
112	230.0	PLATED	2311		
113	232.0	PLATED	2311		
114	234.0	PLATED	2311		
115	236.0	PLATED	2311		
116	238.0	PLATED	2311		
117	240.0	PLATED	2311		
118	242.0	PLATED	2311		
119	244.0	PLATED	2311		
120	246.0	PLATED	2311		
121	248.0	PLATED	2311		
122	250.0	PLATED	2311		
123	252.0	PLATED	2311		
124	254.0	PLATED	2311		
125	256.0	PLATED	2311		
126	258.0	PLATED	2311		
127	260.0	PLATED	2311		
128	262.0	PLATED	2311		
129	264.0	PLATED	2311		
130	266.0	PLATED	2311		
131	268.0	PLATED	2311		
132	270.0	PLATED	2311		
133	272.0	PLATED	2311		
134	274.0	PLATED	2311		
135	276.0	PLATED	2311		
136	278.0	PLATED	2311		
137	280.0	PLATED	2311		
138	282.0	PLATED	2311		
139	284.0	PLATED	2311		
140	286.0	PLATED	2311		
141	288.0	PLATED	2311		
142	290.0	PLATED	2311		
143	292.0	PLATED	2311		
144	294.0	PLATED	2311		
145	296.0	PLATED	2311		
146	298.0	PLATED	2311		
147	300.0	PLATED	2311		
148	302.0	PLATED	2311		
149	304.0	PLATED	2311		
150	306.0	PLATED	2311		
151	308.0	PLATED	2311		
152	310.0	PLATED	2311		
153	312.0	PLATED	2311		
154	314.0	PLATED	2311		
155	316.0	PLATED	2311		
156	318.0	PLATED	2311		
157	320.0	PLATED	2311		
158	322.0	PLATED	2311		
159	324.0	PLATED	2311		
160	326.0	PLATED	2311		
161	328.0	PLATED	2311		
162	330.0	PLATED	2311		
163	332.0	PLATED	2311		
164	334.0	PLATED	2311		
165	336.0	PLATED	2311		
166	338.0	PLATED	2311		
167	340.0	PLATED	2311		
168	342.0	PLATED	2311		
169	344.0	PLATED	2311		
170	346.0	PLATED	2311		
171	348.0	PLATED	2311		
172	350.0	PLATED	2311		
173	352.0	PLATED	2311		
174	354.0	PLATED	2311		
175	356.0	PLATED	2311		
176	358.0	PLATED	2311		
177	360.0	PLATED	2311		
178	362.0	PLATED	2311		
179	364.0	PLATED	2311		
180	366.0	PLATED	2311		
181	368.0	PLATED	2311		
182	370.0	PLATED	2311		
183	372.0	PLATED	2311		
184	374.0	PLATED	2311		
185	376.0	PLATED	2311		
186	378.0	PLATED	2311		
187	380.0	PLATED	2311		
188	382.0	PLATED	2311		
189	384.0	PLATED	2311		
190	386.0	PLATED	2311		
191	388.0	PLATED	2311		
192	390.0	PLATED	2311		
193	392.0	PLATED	2311		
194	394.0	PLATED	2311		
195	396.0	PLATED	2311		
196	398.0	PLATED	2311		
197	400.0	PLATED	2311		
198	402.0	PLATED	2311		
199	404.0	PLATED	2311		
200	406.0	PLATED	2311		
201	408.0	PLATED	2311		
202	410.0	PLATED	2311		
203	412.0	PLATED	2311		
204	414.0	PLATED	2311		
205	416.0	PLATED	2311		
206	418.0	PLATED	2311		
207	420.0	PLATED	2311		
208	422.0	PLATED	2311		
209	424.0	PLATED	2311		
210	426.0	PLATED	2311		
211	428.0	PLATED	2311		
212	430.0	PLATED	2311		
213	432.0	PLATED	2311		
214	434.0	PLATED	2311		
215	436.0	PLATED	2311		
216	438.0	PLATED	2311		
217	440.0	PLATED	2311		
218	442.0	PLATED	2311		
219	444.0	PLATED	2311		
220	446.0	PLATED	2311		
221	448.0	PLATED	2311		
222	450.0	PLATED	2311		
223	452.0	PLATED	2311		
224	454.0	PLATED	2311		
225	456.0	PLATED	2311		
226	458.0	PLATED	2311		
227	460.0	PLATED	2311		
228	462.0	PLATED	2311		
229	464.0	PLATED	2311		
230	466.0	PLATED	2311		
231	468.0	PLATED	2311		
232	470.0	PLATED	2311		
233	472.0	PLATED	2311		
234	474.0	PLATED	2311		
235	476.0	PLATED	2311		
236	478.0	PLATED	2311		
237	480.0	PLATED	2311		
238	482.0	PLATED	2311		
239	484.0	PLATED	2311		
240	486.0	PLATED	2311		
241	488.0	PLATED	2311		
242	490.0	PLATED	2311		
243	492.0	PLATED	2311		
244	494.0	PLATED	2311		
245	496.0	PLATED	2311		
246	498.0	PL			

IMPORTANT NOTICE FOR TI DESIGN INFORMATION AND RESOURCES

Texas Instruments Incorporated ("TI") technical, application or other design advice, services or information, including, but not limited to, reference designs and materials relating to evaluation modules, (collectively, "TI Resources") are intended to assist designers who are developing applications that incorporate TI products; by downloading, accessing or using any particular TI Resource in any way, you (individually or, if you are acting on behalf of a company, your company) agree to use it solely for this purpose and subject to the terms of this Notice.

TI's provision of TI Resources does not expand or otherwise alter TI's applicable published warranties or warranty disclaimers for TI products, and no additional obligations or liabilities arise from TI providing such TI Resources. TI reserves the right to make corrections, enhancements, improvements and other changes to its TI Resources.

You understand and agree that you remain responsible for using your independent analysis, evaluation and judgment in designing your applications and that you have full and exclusive responsibility to assure the safety of your applications and compliance of your applications (and of all TI products used in or for your applications) with all applicable regulations, laws and other applicable requirements. You represent that, with respect to your applications, you have all the necessary expertise to create and implement safeguards that (1) anticipate dangerous consequences of failures, (2) monitor failures and their consequences, and (3) lessen the likelihood of failures that might cause harm and take appropriate actions. You agree that prior to using or distributing any applications that include TI products, you will thoroughly test such applications and the functionality of such TI products as used in such applications. TI has not conducted any testing other than that specifically described in the published documentation for a particular TI Resource.

You are authorized to use, copy and modify any individual TI Resource only in connection with the development of applications that include the TI product(s) identified in such TI Resource. NO OTHER LICENSE, EXPRESS OR IMPLIED, BY ESTOPPEL OR OTHERWISE TO ANY OTHER TI INTELLECTUAL PROPERTY RIGHT, AND NO LICENSE TO ANY TECHNOLOGY OR INTELLECTUAL PROPERTY RIGHT OF TI OR ANY THIRD PARTY IS GRANTED HEREIN, including but not limited to any patent right, copyright, mask work right, or other intellectual property right relating to any combination, machine, or process in which TI products or services are used. Information regarding or referencing third-party products or services does not constitute a license to use such products or services, or a warranty or endorsement thereof. Use of TI Resources may require a license from a third party under the patents or other intellectual property of the third party, or a license from TI under the patents or other intellectual property of TI.

TI RESOURCES ARE PROVIDED "AS IS" AND WITH ALL FAULTS. TI DISCLAIMS ALL OTHER WARRANTIES OR REPRESENTATIONS, EXPRESS OR IMPLIED, REGARDING TI RESOURCES OR USE THEREOF, INCLUDING BUT NOT LIMITED TO ACCURACY OR COMPLETENESS, TITLE, ANY EPIDEMIC FAILURE WARRANTY AND ANY IMPLIED WARRANTIES OF MERCHANTABILITY, FITNESS FOR A PARTICULAR PURPOSE, AND NON-INFRINGEMENT OF ANY THIRD PARTY INTELLECTUAL PROPERTY RIGHTS.

TI SHALL NOT BE LIABLE FOR AND SHALL NOT DEFEND OR INDEMNIFY YOU AGAINST ANY CLAIM, INCLUDING BUT NOT LIMITED TO ANY INFRINGEMENT CLAIM THAT RELATES TO OR IS BASED ON ANY COMBINATION OF PRODUCTS EVEN IF DESCRIBED IN TI RESOURCES OR OTHERWISE. IN NO EVENT SHALL TI BE LIABLE FOR ANY ACTUAL, DIRECT, SPECIAL, COLLATERAL, INDIRECT, PUNITIVE, INCIDENTAL, CONSEQUENTIAL OR EXEMPLARY DAMAGES IN CONNECTION WITH OR ARISING OUT OF TI RESOURCES OR USE THEREOF, AND REGARDLESS OF WHETHER TI HAS BEEN ADVISED OF THE POSSIBILITY OF SUCH DAMAGES.

You agree to fully indemnify TI and its representatives against any damages, costs, losses, and/or liabilities arising out of your non-compliance with the terms and provisions of this Notice.

This Notice applies to TI Resources. Additional terms apply to the use and purchase of certain types of materials, TI products and services. These include; without limitation, TI's standard terms for semiconductor products (<http://www.ti.com/sc/docs/stdterms.htm>), [evaluation modules](#), and [samples](http://www.ti.com/sc/docs/sampterm.htm) (<http://www.ti.com/sc/docs/sampterm.htm>).

Mailing Address: Texas Instruments, Post Office Box 655303, Dallas, Texas 75265
Copyright © 2017, Texas Instruments Incorporated